



P&P NON-FERROUS
SINCE 1983

THE **BAR** STOCKLIST



P&P Non-Ferrous have a proud history of supplying many different industries and market sectors from our head office in the West Midlands, our sales and distribution centres in Dorset and Bristol, and dedicated sales office in Essex.



With over 3,000 items in stock and the widest range of non-ferrous bar products available from any single supplier in the UK, P&P is the one-stop-shop for all your individual needs. We're specialists in copper, brass, aluminium, stainless steel, bronze and aluminium bronze - all held in stock and processed to customer requirements.

We have a huge range of stock but we keep all our offcuts meaning we can quickly service requirements for short lengths or small pieces. We've been supplying the industry for 40 years so it's rare that we don't have exactly what a customer needs.

Contact our friendly and experienced sales team for your next multi-metal requirement. With deliveries to suit your individual needs, P&P have you covered no matter what!





Steel Dynamics Group[®]

Family of Companies

The Steel Dynamics Group Family of Companies consists of four businesses, relentlessly working together to reduce our customer's costs and enabling UK manufacturing to flourish.

With recent acquisitions, new premises, investments in capital equipment and significant stock holding in stainless steel, aluminium, copper and brass, it's a great time to talk to the group about what we can do for you.



Steel
Dynamics UK[®]

The UK's leading stainless steel stockholder and processor, supplying a range of mainstream stainless steel profiles to complex supply chains.



A reputable manufacturer and stockholder of cold drawn stainless steel and nickel alloy bars, as well as being the largest stockholder of 1.4003 stainless steel.



Specialists in aluminium, brass, bronze, copper, phosphor bronze and stainless steel, all held in stock and processed to customer requirements.



Universally recognised as the 'Best in Brass', Bornmore Metals also carry a very impressive inventory of multi-metals, available for immediate delivery.



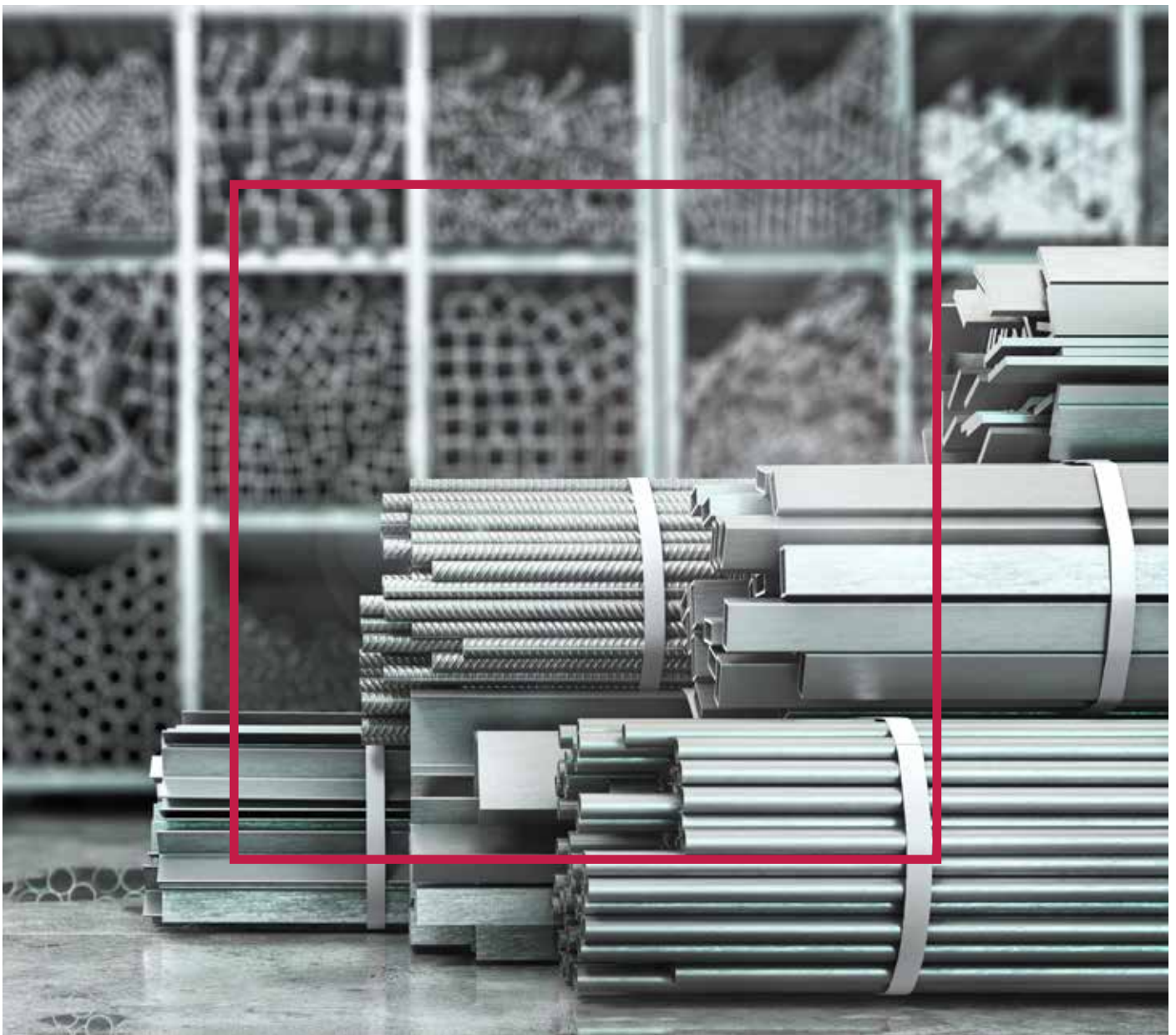
The Steel Dynamics group offer our customers instant access to a comprehensive inventory of non-ferrous metal product lines. The group strategy is to deliver profitable growth by leveraging our businesses in to emerging markets in the UK and worldwide.

We operate a best practice regime, which means continuous improvement in processes and sustainable manufacturing, quality standards, customer service and new technologies. This consistent investment allows us to review the cost base to be lean, efficient and competitive.

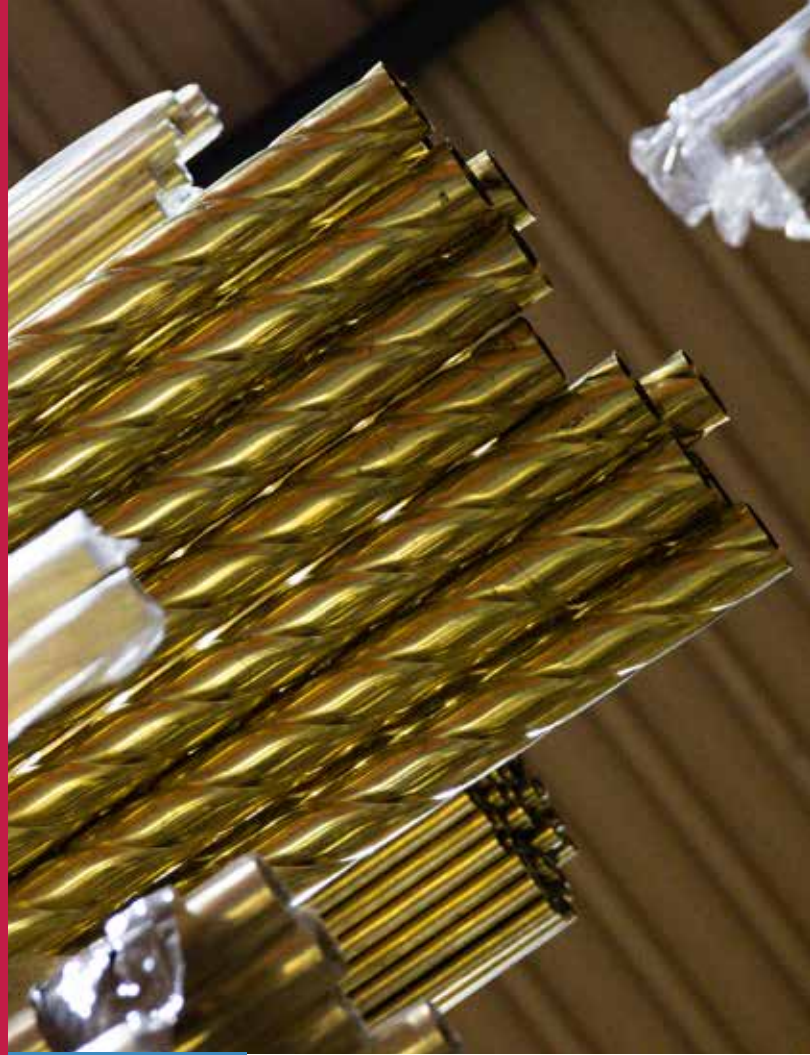


**LET'S WORK TOGETHER
TO BUILD A BRIGHTER,
MORE SUSTAINABLE FUTURE.**

**THE WIDEST
RANGE OF
NON-FERROUS
BAR
PRODUCTS
AVAILABLE
FROM ANY
SINGLE
SUPPLIER
IN THE**



CONTENTS



STAINLESS STEEL 06-19

ALUMINIUM 20-25

BRASS 26-33

COPPER 34-39

BRONZE 40-53

NICKEL ALLOY 54-57

SERVICES 58-60



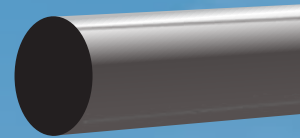
STAINLESS STEEL

Stainless steel is a type of alloy that is resistant to rusting and corrosion. It is made of iron, chromium, and nickel, and sometimes other elements like carbon are added to obtain the desired properties. The chromium in stainless steel forms a passive film that can protect the material and self-heal in the presence of oxygen, which makes it resistant to rusting and corrosion.

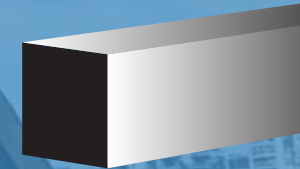
Stainless steel is used in a variety of applications such as cookware, cutlery, surgical instruments, major appliances, vehicles, construction material in large buildings, industrial equipment, storage tanks, tankers for chemicals and food products. The biological cleanability of stainless steel is superior to both aluminium and copper, and comparable to glass.

There are more than 100 different grades of stainless steel available and we stock a comprehensive range in a variety of grades, forms and sizes, including the higher strength and corrosion resistant duplex and super duplex alloys.

BAR SHAPES:



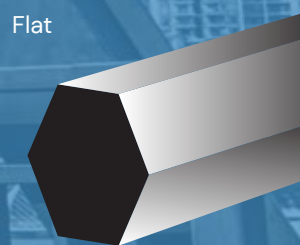
Round



Square



Flat



Hexagon

STOCKED GRADES:

- 303 ■ 304 ■ 304L ■ 316 ■ 316L ■ 321 ■ 440B ■ 440C ■ 17/4PH ■ 1.4005 ■ 1.4057 ■
- 1.4125 ■ 1.4301 ■ 1.4305 ■ 1.4307 ■ 1.4401 ■ 1.4404 ■ 1.4462 ■ 1.4501 ■ 1.4541 ■
- S17400 ■ S32760 ■ S31803 ■

STAINLESS STEEL

303 - 1.4305

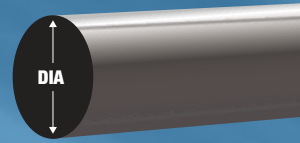
SIZE (Dia)	WEIGHT (kg/m)
6mm (13/55")	0.22
6.35mm (1/4")	0.25
8mm (23/73")	0.40
9.525mm (3/8")	0.57
10mm (13/33")	0.62
12mm (43/91")	0.90
12.7mm (1/2")	1.01
14.288mm (9/16")	1.28
15.875mm (5/8")	1.58
18mm (17/24")	2.03
19.05mm (3/4")	2.28
20mm (63/80")	2.47
22.225mm (7/8")	3.10
25mm (63/64")	3.92
25.4mm (1")	4.05
28.575mm (1 1/8")	5.13
30mm (1 2/11")	5.65
31.75mm (1 1/4")	6.33
34.925mm (1 3/8")	7.66
35mm (1 31/82")	7.69
38.1mm (1 1/2")	9.12
41.275mm (1 5/8")	10.70
44.45mm (1 3/4")	12.41
47.625mm (1 7/8")	14.25
50.8mm (2")	16.21
53.975mm (2 1/8")	18.30
57.15mm (2 1/4")	20.52
60mm (2 25/69")	22.61
60.325mm (2 3/8")	22.86
63.5mm (2 1/2")	25.33
66.675mm (25/8")	27.93
69.85mm (2 3/4")	30.65
73.025mm (2 7/8")	33.50
76.2mm (3")	36.48
82.55mm (3 1/4")	42.81
88.9mm (3 1/2")	49.65
90mm (3 25/46")	50.89
95.25mm (3 3/4")	57.00

304 - 1.4301

SIZE (Dia)	WEIGHT (kg/m)
5mm (13/66")	0.15
6mm (13/55")	0.22
6.35mm (1/4")	0.25
8mm (23/73")	0.39
9.525mm (3/8")	0.57
10mm (13/33")	0.62
12mm (43/91")	0.90
12.7mm (1/2")	0.99
14mm (43/78")	1.23
14.288mm (9/16")	1.28
15.875mm (5/8")	1.58
16mm (17/27")	1.59
18mm (17/24")	2.03
19.05mm (3/4")	2.28
20mm (63/80")	2.47
22.225mm (7/8")	3.10
25mm (63/64")	3.87
25.4mm (1")	3.99
40mm (1 50/87")	9.91

ROUND BAR

BS EN 10088-3



304L - 1.4307

SIZE (Dia)	WEIGHT (kg/m)
6.35mm (1/4")	0.25
8mm (23/73")	0.40
9.525mm (3/8")	0.57
10mm (37/94")	0.62
12mm (43/92")	0.90
12.7mm (1/2")	1.01
14mm (43/78")	1.23
14.288mm (9/16")	1.28
15.875mm (5/8")	1.58
18mm (17/24")	2.03
19.05mm (3/4")	2.28
20mm (63/80")	2.51
22.225mm (7/8")	3.10
25mm (63/64")	3.92
25.4mm (1")	4.05
28.575mm (1 1/8")	5.13
30mm (1 17/94")	5.65
31.75mm (1 1/4")	6.33
34.925mm (1 3/8")	7.66
38.1mm (1 1/2")	9.12
40mm (1 23/40")	10.05
41.275mm (1 5/8")	10.70
44.45mm (1 3/4")	12.41
47.625mm (1 7/8")	14.25
50.8mm (2")	16.21
53.975mm (2 1/8")	18.30
57.15mm (2 1/4")	20.52
60mm (2 25/69")	22.61
60.325mm (2 3/8")	22.86
63.5mm (2 1/2")	25.33

304L - 1.4307

SIZE (Dia)	WEIGHT (kg/m)
73.025mm (2 7/8")	33.50
76.2mm (3")	36.48
82.55mm (3 1/4")	42.81
88.9mm (3 1/2")	49.65
90mm (3 44/81")	50.89
95.25mm (3 3/4")	57.00
101.6mm (4")	64.85
107.95mm (4 1/4")	73.21
114.3mm (4 1/2")	82.08
120.65mm (4 3/4")	91.46
127mm (5")	101.34
133.35mm (5 1/4")	111.72
139.7mm (5 1/2")	122.62
146.05mm (5 3/4")	134.02
152.4mm (6")	145.93
158.75 (6 1/4")	158.34
165.1mm (6 1/2")	171.26
171.45mm (6 3/4")	184.69
177.8mm (7")	198.62
184.15mm (7 1/4")	213.07
190.5mm (7 1/2")	228.01
203.2mm (8")	259.43
215.9mm (8 1/2")	292.87
228.6mm (9")	328.34
241.3mm (9 1/2")	365.84
254mm (10")	405.36
266.7mm (10 1/2")	446.91
279.4mm (11")	490.49
304.8mm (12")	583.72

STAINLESS STEEL

321 - 1.4541

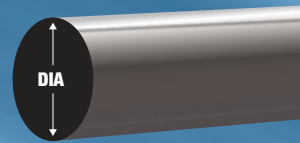
SIZE (Dia)	WEIGHT (kg/m)
12.7mm (1/2")	1.01
20mm (63/8")	2.51
25.4mm (1")	4.05
88.9mm (3 1/2")	49.65

316 - 1.4401

SIZE (Dia)	WEIGHT (kg/m)
4mm (3/19")	0.09
6mm (13/55")	0.22
8mm (23/73")	0.39
12mm (43/91")	0.89
14mm (43/78")	1.23
15mm (13/22")	1.39
16mm (17/27")	1.58
20mm (63/80")	2.47
25mm (63/64")	3.87
70mm (2 65/86")	30.7

ROUND BAR

BS EN 10088-3



316L - 1.4404

SIZE (Dia)	WEIGHT (kg/m)
6.35mm (1/4")	0.25
8mm (23/73")	0.40
9.525mm (3/8")	0.57
10mm (13/33")	0.62
12mm (43/91")	0.90
12.7mm (1/2")	1.01
14mm (43/78")	1.23
14.288mm (9/16")	1.28
15mm (13/22")	1.41
15.875mm (5/8")	1.58
16mm (17/27")	1.60
18mm (17/24")	2.03
19.05mm (3/4")	2.28
20mm (63/80")	2.47
22.225mm (7/8")	3.10
25mm (63/64")	3.92
25.4mm (1")	4.05
28.575mm (1 1/8")	5.13
30mm (1 17/94")	5.65
31.75mm (1 1/4")	6.33
34.925mm (1 3/8")	7.66
38.1mm (1 1/2")	9.12
40mm (1 50/87")	10.05
41.275mm (1 5/8")	10.70
44.45mm (1 3/4")	12.41
47.625mm (1 7/8")	14.25
50mm (1 31/32")	15.70
50.8mm (2")	16.21
53.975mm (2 1/8")	18.30
57.15mm (2 1/4")	20.52
60mm (2 25/69")	22.61
60.33mm (2 3/8")	22.86
63.5mm (2 1/2")	25.33

SIZE (Dia)	WEIGHT (kg/m)
66.675mm (2 5/8")	27.93
69.85mm (2 3/4")	30.65
70mm (2 65/86")	30.78
73.025mm (2 7/8")	33.50
76.2mm (3")	36.48
82.55mm (3 1/4")	42.81
88.9mm (3 1/2")	49.65
90mm (3 44/81")	50.89
95.25mm (3 3/4")	57.00
101.6mm (4")	64.85
107.95mm (4 1/4")	73.21
114.3mm (4 1/2")	82.08
120.65mm (4 3/4")	91.46
127mm (5")	101.34
133.35mm (5 1/4")	111.72
139.7mm (5 1/2")	122.62
146.05mm (5 3/4")	134.02
152.4mm (6")	145.93
158.75mm (6 1/4")	158.34
165.1mm (6 1/2")	171.26
171.45mm (6 3/4")	184.69
177.8mm (7")	198.62
184.15mm (7 1/4")	213.07
190.5mm (7 1/2")	228.01
203.2mm (8")	259.43
215.9mm (8 1/2")	292.87
220mm (8 43/65")	304.10
228.6mm (9")	328.34
241.3mm (9 1/2")	365.84
254mm (10")	405.36
266.7 (10 1/2")	446.91
279.4mm (11")	490.49
292.1mm (11 1/2")	536.09
304.8mm (12")	583.72
330.2mm (13")	685.06
355.6mm (14")	794.51
381mm (15")	912.07
406.4mm (16")	1037.73
457.2mm (18")	1313.38
508mm (20")	1621.46

STAINLESS STEEL

431S29 - 1.4057

SIZE (Dia)	WEIGHT (kg/m)
4.76mm (3/16")	0.14
8mm (23/73")	0.41
9.53mm (3/8")	0.57
10mm (13/33")	0.65
11.11mm (7/16")	0.77
12mm (43/91")	0.93
12.7mm (1/2")	1.01
14.29mm (9/16")	1.28
15.88mm (5/8")	1.58
16mm (17/27")	1.66
19.05mm (3/4")	2.28
22.225mm (7/8")	3.22
25.4mm (1")	4.05
28.575mm (1 1/8")	5.32
31.75mm (1 1/4")	6.33
38.1mm (1 1/2")	9.46
44.45mm (1 3/4")	12.41
50mm (1 92/95")	15.70
50.8mm (2")	16.21
53.98mm (2 1/8")	18.30
57.15mm (2 1/4")	20.52
57.5mm (2 24/91")	21.55
63.8mm (2 43/84")	26.53
66.68mm (2 5/8")	27.93
70mm (2 65/86")	31.94
82.55mm (3 1/4")	42.81
85mm (3 26/75")	45.39
88.9mm (3 1/2")	50.89
90mm (3 44/81")	51.51
100mm (3 89/95")	62.83
101.6mm (4")	64.85
114.3mm (4 1/2")	82.08
127mm (5")	101.34
130mm (5 11/93")	106.18
165.1mm (6 1/2")	171.26
177.8mm (7")	198.62
184.15mm (7 1/4")	213.07
190.5mm (7 1/2")	228.01
228.6mm (9")	328.34

440B - 440C - 1.4125

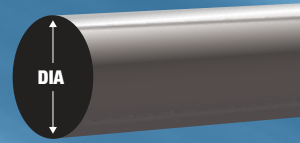
SIZE (Dia)	WEIGHT (kg/m)
10mm (13/33")	0.62
16mm (17/27")	1.60
20mm (63/80")	2.51
25.6mm (1")	4.11
28.58mm (1 1/8")	5.13
30mm (1 17/94")	5.86
30.302mm (1 11/57")	5.92
32.5mm (1 26/93")	6.63
38mm (1 49/99")	9.07
38.1mm (1 1/2")	9.12
40.2mm (1 7/12")	10.53
40.233mm (1 52/89")	10.55
41.28mm (1 5/8")	10.70
44.45mm (1 3/4")	12.41
45.2mm (1 53/68")	13.31
47.91mm (1 39/44")	14.42
48mm (1 8/9")	14.47
51mm (2")	16.34
54.95mm (2 8/49")	19.68
57.15mm (2 1/4")	20.52
66.2mm (2 57/94")	28.56
70mm (2 65/86")	30.78
90mm (3 44/81")	50.89
95mm (3 57/77")	56.71
95.25mm (3 3/4")	57.06
142mm (5 13/22")	126.69

416S21 - 1.4005

SIZE (Dia)	WEIGHT (kg/m)
3.57mm (9/64")	0.08
19.05mm (3/4")	2.36
25mm (63/64")	4.07
30mm (1 17/94")	5.65
41.275mm (1 5/8")	11.10
50.8mm (2")	16.21
68.5mm (2 23/33")	28.56

ROUND BAR

BS EN 10088-3



UNS S17400 - 17/4PH

SIZE (Dia)	WEIGHT (kg/m)
3.18mm (1/8")	0.06
6.35mm (1/4")	0.25
8mm (23/73")	0.40
9.53mm (3/8")	0.57
10mm (13/33")	0.63
12.7mm (1/2")	1.01
15.88mm (5/8")	1.58
19.05mm (3/4")	2.28
22mm (13/15")	2.95
22.23mm (7/8")	3.10
25.4mm (1")	4.05
28.58mm (1 1/8")	5.13
31.75mm (1 1/4")	6.33
34.93mm (1 3/8")	7.43
35mm (1 31/82")	7.70
38.1mm (1 1/2")	9.12
40mm (1 50/87")	9.74
41.275mm (1 5/8")	10.70
44.45mm (1 3/4")	12.41
47.625mm (1 7/8")	14.25
50.8mm (2")	16.21
53.98mm (2 1/8")	17.74
57.15mm (2 1/4")	20.52
60.33mm (2 3/8")	22.15
63.5mm (2 1/2")	25.33
69.85mm (2 3/4")	30.65
70mm (2 65/86")	29.83
76.2mm (3")	36.48
76.454mm (3 1/99")	36.73
80mm (3 3/20")	38.96
82.55mm (3 1/4")	41.75
88.9mm (3 1/2")	49.66
90.5mm (3 9/16")	51.46
95.25mm (3 3/4")	55.22

SIZE (Dia)	WEIGHT (kg/m)
101.6mm (4")	62.83
107.95mm (4 1/4")	70.93
114.3mm (4 1/2")	79.52
120.65mm (4 3/4")	88.6
127mm (5")	101.34
133.33mm (5 1/4")	108.21
139.7mm (5 1/2")	118.79
146.05mm (5 3/4")	129.84
152.4mm (6")	141.37
165.1mm (6 1/2")	165.92
175mm (6 8/9")	186.41
177.8mm (7")	192.42
190.5mm (7 1/2")	220.89
203.2mm (8")	251.33
215.9mm (8 1/2")	283.72
228.6mm (9")	318.09
241.3mm (9 1/2")	354.41
254mm (10")	392.7
266.7mm (10 1/2")	432.95
279.4mm (11")	475.16
292.10mm (11 1/2")	519.34
304.8mm (12")	565.49
317.5mm (12 1/2")	633.38
330.2mm (13")	663.66
355.6mm (14")	794.52
360mm (14 9/52")	788.85
374.65mm (14 3/4")	854.36
381mm (15")	883.57
406.4mm (16")	1005.31
410mm (16 1/7")	1023.2
457.2mm (18")	1272.34
460mm (18 1/9")	1287.97
510mm (20 7/89")	1583.19

STAINLESS STEEL

DUPLEX

UNS 31803 - 1.4462

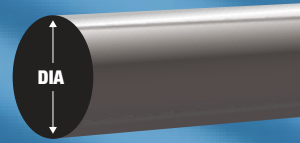
SIZE (Dia)	WEIGHT (kg/m)
16mm (17/27")	1.60
19.05mm (3/4")	2.28
25.4mm (1")	4.05
31.75mm (1 1/4")	6.33
38.1mm (1 1/2")	9.12
45mm (1 71/92")	12.72
50.8mm (2")	16.21
76.2mm (3")	36.48

Duplex stainless steel is a type of stainless steel that is composed of grains of two types of stainless steel material, austenitic and ferritic. Duplex stainless steels are designed to provide better corrosion resistance and higher strength than standard austenitic stainless steels due to the differences in composition.

Both the low nickel content and the high strength (enabling thinner sections to be used) give significant cost benefits. They are therefore used extensively in the offshore oil and gas industry for pipework systems, manifolds, risers, etc. and in the petrochemical industry in the form of pipelines and pressure vessels.

ROUND BAR

BS EN 10088-3



SUPER DUPLEX

UNS 32760 - 1.4501

SIZE (Dia)	WEIGHT (kg/m)
12.7mm (1/2")	1.01
15.88mm (5/8")	1.58
19.05mm (3/4")	2.28
20mm (63/80")	2.51
22.23mm (7/8")	3.10
25.4mm (1")	4.05
28.58mm (1 1/8")	5.13
31.75mm 1 1/4	6.21
38.1mm (1 1/2")	9.12
44.45mm (1 3/4")	12.41
50.8mm (2")	16.21
54.96mm (2 9/55")	18.97
57.15mm (2 1/4")	20.52
60.33mm (2 3/8")	22.86
63.5mm (2 1/2")	25.33
66.68mm (2 5/8")	27.93
76.2mm (3")	36.48
127mm (5")	101.34

Super duplex stainless steel is a type of corrosion-resistant alloy that is highly resistant to chloride-induced stress corrosion cracking and pitting. It is often used as a substitute for 300 series stainless steel, high nickel super-austenitic steels and nickel-based alloys.

Super duplex stainless steel is often used in applications that require high strength and corrosion resistance in various industries such as chemical/petrochemical, pulp and paper and marine, such as oil and gas pipelines, heat exchangers and pressure vessels.

STAINLESS STEEL

SQUARE BAR

304 - 1.4301

SIZE (H/W)	WEIGHT (kg/m)
5mm (13/66")	0.2
6mm (13/55")	0.28
15mm (13/22")	1.77

316 - 1.4401

SIZE (H/W)	WEIGHT (kg/m)
10mm (13/33")	0.83
12.7mm (1/2")	1.33
20mm (63/80")	3.32
25mm (63/64")	5.18
25.4mm (1")	5.35
44.45mm (1 3/4")	16.40
50mm (1 92/95")	20
60mm (2 25/69")	28.51
70mm (2 65/86")	39.2
88.9mm (3 1/2")	63.22
90mm (3 44/81")	64.8
101.6mm (4")	82.58

304 - 1.4301 / 304L - 1.4307

SIZE (H/W)	WEIGHT (kg/m)
12mm (43/91")	1.19
16mm (17/27")	2.04
20mm (63/80")	3.32
22mm (13/15")	4.01
25mm (63/64")	5
30mm (1 17/94")	7.47
40mm (1 50/87")	13.28
44.45mm (1 3/4")	15.80
50mm (1 92/95")	20
50.8mm (2")	20.64
60mm (2 25/69")	29.88
63.5mm (2 1/2")	32.25
76.2mm (3")	48.19



SQUARE / HEX BAR

BS EN 10088-3

HEIGHT

WIDTH

ACROSS
FLAT

HEXAGONAL BAR

303 - 1.4305

SIZE (A/F)	WEIGHT (kg/m)
12.7mm (1/2")	1.11
14.28mm (9/16")	1.41
15.875mm (5/8")	1.74
18.034mm (49/69")	2.25
19.05mm (3/4")	2.51
20mm (63/80")	2.77
20.638mm (13/16")	2.95
22.225mm (7/8")	3.42
23.368mm (23/25")	3.78
24mm (17/18")	3.99
25.4mm (1")	4.47
28.58mm (1 1/8")	5.65
30mm (1 17/94")	6.23
31.75mm (1 1/4")	6.98
34.93mm (1 3/8")	8.45
36mm (1 38/91")	8.97
37.592mm (1 12/25")	9.79
38.1mm (1 1/2")	10.05
41mm (1 43/70")	11.64
41.275mm (1 5/8")	11.80
42.418mm (1 65/97")	12.46
44.45mm (1 3/4")	13.68
50.8mm (2")	17.87
52.07mm (2 1/20")	18.78
55mm (2 1/6")	20.95

316L - 1.4404

SIZE (A/F)	WEIGHT (kg/m)
12.7mm (1/2")	1.11
14.275mm (9/16")	1.41
15.875mm (5/8")	1.74
18.034mm (49/69")	2.25
19.05mm (3/4")	2.51
20.64mm (13/16")	2.95
22.225mm (7/8")	3.42
23.368mm (23/25")	3.78
24mm (17/18")	3.99
25.4mm (1")	4.47
28.575mm (1 1/8")	5.65
30mm (1 17/94")	6.23
31.75mm (1 1/4")	6.98
34.925mm (1 3/8")	8.45
36mm (1 38/91")	8.97
37.592mm (1 12/25")	9.79
38.1mm (1 1/2")	10.05
41mm (1 43/70")	11.64
41.275mm (1 5/8")	11.80
42.418mm (1 65/97")	12.46
44.45mm (1 3/4")	13.68
50.8mm (2")	17.87
52.07mm (2 1/20")	18.78
55mm (2 1/6")	20.95

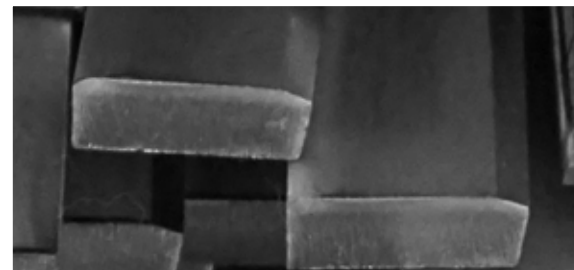


STAINLESS STEEL

304 - 1.4301 / 304L - 1.4307

SIZE (H/W)	WEIGHT (kg/m)
12 x 3mm (43/91 x 11/93")	0.28
12 x 5mm (43/91 x 13/66")	0.48
12 x 6mm (43/91 x 17/72")	0.57
15 x 3mm (49/83 x 11/93")	0.36
15 x 5mm (49/83 x 13/66")	0.60
20 x 3mm (63/80 x 11/93")	0.48
20 x 6mm (63/80 x 17/72")	0.96
20 x 8mm (63/80 x 23/73")	1.28
20 x 10mm (63/80 x 37/94")	1.66
20 x 12mm (63/80 x 43/91")	1.99
25 x 3mm (63/64 x 11/93")	0.62
25 x 6mm (63/64 x 17/72")	1.24
25 x 8mm (63/64 x 23/73")	1.60
25 x 10mm (63/64 x 37/94")	2
25 x 20mm (63/64 x 63/80")	4
30 x 3mm (1 17/94 x 11/93")	0.72
30 x 5mm (1 17/94 x 13/66")	1.20
30 x 8mm (1 17/94 x 23/73")	1.92
30 x 10mm (1 17/94 x 37/94")	2.40
30 x 25mm (1 17/94 x 63/64")	6
35 x 10mm (1 31/82 x 37/94")	2.90
40 x 3mm (1 50/87 x 11/93")	0.96
40 x 5mm (1 50/87 x 13/66")	1.60
40 x 6mm (1 50/87 x 17/72")	1.92
40 x 10mm (1 50/87 x 37/94")	3.32
40 x 12mm (1 50/87 x 43/91")	3.84
40 x 15mm (1 50/87 x 49/83")	4.98
40 x 20mm (1 50/87 x 63/80")	6.64
40 x 25mm (1 50/87 x 63/64")	8.30
40 x 30mm (1 50/87 x 1 17/94")	9.96
45 x 6mm (1 71/92 x 17/72")	2.16
50 x 3mm (1 92/95 x 11/93")	1.2
50 x 6mm (1 92/95 x 17/72")	2.49
50 x 12mm (1 92/95 x 43/91")	4.8
50 x 15mm (1 92/95 x 49/83")	6
50 x 25mm (1 92/95 x 63/64")	10
50 x 30mm (1 92/95 x 1 17/94")	12.45
50 x 40mm (1 92/95 x 1 50/87")	16

SIZE (H/W)	WEIGHT (kg/m)
60 x 3mm (2 25/69 x 11/93")	1.44
60 x 10mm (2 25/69 x 37/94")	4.8
60 x 15mm (2 25/69 x 49/83")	7.2
60 x 20mm (2 25/69 x 63/80")	9.6
60 x 25mm (2 25/69 x 63/64")	12
60 x 30mm (2 25/69 x 1 17/94")	14.4
60 x 40mm (2 25/69 x 1 50/87")	19.2
70 x 20mm (2 65/86 x 63/80")	11.20
70 x 25mm (2 65/86 x 63/64")	13.88
70 x 30mm (2 65/86 x 1 17/94")	16.80
70 x 40mm (2 65/86 x 1 50/87")	22.40
70 x 50mm (2 65/86 x 1 92/95")	28
75 x 5mm (2 81/85 x 13/66")	3.11
75 x 10mm (2 81/85 x 37/94")	6.22
75 x 12mm (2 81/85 x 43/91")	7.2
75 x 15mm (2 81/85 x 49/83")	9
75 x 20mm (2 81/85 x 63/80")	12
75 x 25mm (2 81/85 x 63/64")	15.56
75 x 30mm (2 81/85 x 1 17/94")	18
80 x 6mm (3 13/87 x 17/72")	3.98
80 x 8mm (3 13/87 x 23/73")	5.31
80 x 12mm (3 13/87 x 43/91")	7.96
80 x 20mm (3 13/87 x 63/80")	13.28
80 x 50mm (3 13/87 x 1 92/95")	32
90 x 20mm (3 44/81 x 63/80")	14.4
100 x 5mm (3 89/95 x 13/66")	4
100 x 10mm (3 89/95 x 37/94")	8
100 x 20mm (3 89/95 x 63/80")	16
100 x 25mm (3 89/95 x 63/64")	20
100 x 30mm (3 89/95 x 1 17/94")	24
100 x 40mm (3 89/95 x 1 50/87")	33.2
100 x 50mm (3 89/95 x 1 92/95")	41.5
105 x 10mm (4 13/97 x 37/94")	8.4
125 x 12mm (4 82/89 x 43/91")	12
150 x 10mm (5 67/74 x 37/94")	12
150 x 12mm (5 48/53 x 43/91")	14.4
160 x 30mm (6 3/10 x 1 2/11")	39.84



FLAT BAR

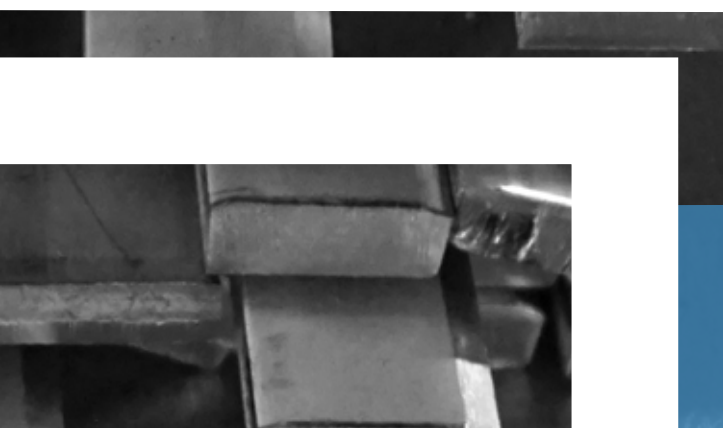
BS EN 10088-3



316 - 1.4401 / 316L - 1.4404

SIZE (H/W)	WEIGHT (kg/m)
12 x 3mm (43/91 x 11/93")	0.29
12 x 5mm (43/91 x 13/66")	0.48
20 x 10mm (63/80 x 37/94")	1.6
20 x 15mm (63/80 x 49/83")	2.49
25 x 5mm (63/64 x 13/66")	1.03
25 x 6mm (63/64 x 17/72")	1.2
25 x 10mm (63/64 x 37/94")	2
25 x 12mm (63/64 x 43/91")	2.49
25 x 15mm (63/64 x 49/83")	3
25 x 20mm (63/64 x 63/80")	4
30 x 3mm (1 17/94 x 11/93")	0.74
30 x 5mm (1 17/94 x 13/66")	1.2
30 x 6mm (1 17/94 x 17/72")	1.49
30 x 10mm (1 17/94 x 37/94")	2.4
30 x 12mm (1 17/94 x 43/91")	2.98
30 x 15mm (1 17/94 x 49/83")	3.63
30 x 20mm (1 17/94 x 63/80")	4.8
40 x 5mm (1 50/87 x 13/66")	1.6
40 x 6mm (1 50/87 x 17/72")	1.99
40 x 8mm (1 50/87 x 23/73")	2.65
40 x 10mm (1 50/87 x 37/94")	3.32
40 x 15mm (1 50/87 x 49/83")	4.98
40 x 20mm (1 50/87 x 63/80")	6.4
40 x 25mm (1 50/87 x 63/64")	8.3
44.45 x 25.4mm (1 3/4 x 1")	9.03
50 x 3mm (1 92/95 x 11/93")	1.2
50 x 5mm (1 92/95 x 13/66")	2
50 x 10mm (1 92/95 x 37/94")	4
50 x 12mm (1 92/95 x 43/91")	4.98
50 x 15mm (1 92/95 x 49/83")	6.22
50 x 20mm (1 92/95 x 63/80")	8
50 x 30mm (1 92/95 x 1 17/94")	12
50 x 40mm (1 92/95 x 1 50/87")	16.6

SIZE (H/W)	WEIGHT (kg/m)
60 x 10mm (2 25/69 x 37/94")	4.98
60 x 12mm (2 25/69 x 43/91")	5.97
60 x 25mm (2 25/69 x 63/64")	12
60 x 30mm (2 25/69 x 1 17/94")	14.40
63.5 x 50.8mm (2 1/2 x 2")	25.80
65 x 12mm (2 52/93 x 43/91")	6.24
65 x 15mm (2 52/93 x 49/83")	8.09
75 x 25mm (2 81/85 x 63/6")	15
75 x 30mm (2 81/85 x 1 17/94")	18
75 x 40mm (2 81/85 x 1 50/87")	24
80 x 20mm (3 13/87 x 63/80")	12.8
80 x 30mm (3 13/87 x 1 17/94")	19.2
80 x 40mm (3 13/87 x 1 50/87")	25.6
100 x 8mm (3 89/95 x 23/73")	6.4
100 x 25mm (3 89/95 x 63/64")	20
100 x 30mm (3 89/95 x 1 17/94")	24.9
125 x 15mm (4 82/89 x 49/83")	15.56
125mm x 30mm (4 82/89 x 1 17/94")	31.12





ALUMINIUM

Aluminium is the most abundant metal in the Earth's crust, where it makes up about 8% of the crust by weight, and there is no other metal compared to its versatility. It has a great affinity towards oxygen, forming a protective layer of oxide on the surface when exposed to air. Additionally, aluminium is a good conductor of heat and electricity, which makes it a good choice for applications that require good thermal or electrical conductivity.

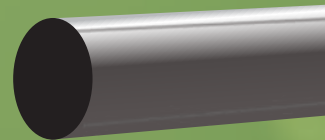
Aluminium is widely used in various sectors and products due to its lightness, durability, functionality, and corrosion resistance. With its characteristics, aluminium can be efficiently used in different industries including automotive, consumer goods, decorative applications and electrical products. Aluminium can also be 100% recycled without losing its natural properties.

6000 Series aluminium grades available in different bar shapes have excellent strength-to-weight ratio, good workability and corrosion resistance for a wide range of uses including architectural and structural applications.

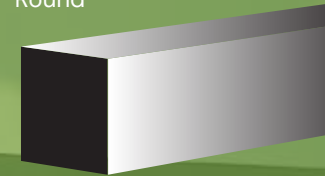
STOCKED GRADES:

■ 6026 ■ 6082 ■

BAR SHAPES:



Round



Square



Flat

ALUMINIUM

ROUND BAR

6082 - T6

SIZE (Dia)	WEIGHT (kg/m)
6.35mm (1/4")	0.08
8mm (23/73")	0.13
9.53mm (3/8")	0.19
12.7mm (1/2")	0.34
15.875mm (5/8")	0.53
19.05mm (3/4")	0.77
20mm (63/80")	0.84
22.225mm (7/8")	1.04
25.4mm (1")	1.36
28.575mm (1 1/8")	1.73
31.75mm (1 1/4")	2.13
34.93mm (1 3/8")	2.58
38.1mm (1 1/2")	3.07
41.28mm (1 5/8")	3.61
42mm (1 49/75")	3.74
42.863mm (1 11/16")	3.89
44.45mm (1 3/4")	4.19
47.625mm (1 7/8")	4.81
50.8mm (2")	5.47
53.98mm (2 1/8")	6.17
57.15mm (2 1/4")	6.92
60.325mm (2 3/8")	7.71
63.5mm (2 1/2")	8.55
66.675mm (2 5/8")	9.42
68mm (2 65/96")	9.80
69.85mm (2 3/4")	10.34
70mm (2 65/86")	10.39
76.2mm (3")	12.31
82.55mm (3 1/4")	14.45
88.9mm (3 1/2")	16.75
95.25mm (3 3/4")	19.23
101.6mm (4")	21.89
107.95 (4 1/4")	24.71
114.3mm (4 1/2")	27.70
120mm (4 71/98")	30.53
120.65mm (4 3/4")	30.86
127mm (5")	34.20
133.35mm (5 1/4")	37.70
139.7mm (5 1/2")	41.38
140mm (5 43/84")	41.56
146mm (5 74/99")	45.20
152.4mm (6")	49.25
160mm (6 29/97")	54.28
165mm (6 49/99")	57.73

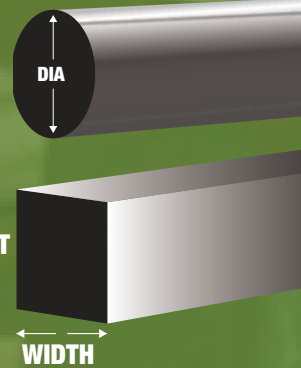
SIZE (Dia)	WEIGHT (kg/m)
165.1mm (6 1/2")	57.80
171.45mm (6 3/4")	62.33
177.8mm (7")	67.03
184.15mm (7 1/4")	71.91
190.5mm (7 1/2")	76.95
203.2mm (8")	87.55
215.9mm (8 1/2")	98.84
228.6mm (9")	110.81
241.3mm (9 1/2")	123.47
254mm (10")	136.81
266.7mm (10 1/2")	150.83
268mm (10 43/78")	152.30
279.4mm (11")	165.54
310mm (12 17/83")	203.78
312mm (12 19/67")	206.42
320mm (12 58/97")	217.14
330mm (13")	230.93
360mm (14 13/75")	274.82
410mm (16 14/99")	356.46

6026 - T6

SIZE (Dia)	WEIGHT (kg/m)
9.525mm (3/8")	0.19
19.05mm (3/4")	0.77
44.45mm (1 3/4")	4.19
50.8mm (2")	5.47
53.9mm (2 5/41")	6.16
57.15mm (2 1/4")	6.92
60mm (2 25/69")	7.63
63.5mm (2 1/2")	8.55
68mm (2 65/96")	9.80
69.85mm (2 3/4")	10.34
70mm (2 65/86")	10.39
76.2mm (3")	12.31
80mm (3 13/87")	13.57
114.3mm (4 1/2")	27.70
133.35mm (5 1/4")	37.70
135mm (5 23/73")	38.64
146mm (5 3/4")	45.20
184.15mm (7 1/4")	71.91
241.3mm (9 1/2")	123.47

ROUND / SQUARE BAR

BS EN 755-2



SQUARE BAR

6082 - T6

SIZE (H/W)	WEIGHT (kg/m)
6.35mm (1/4")	0.10
12.7mm (1/2")	0.43
15.875mm (5/8")	0.68
19.05mm (3/4")	0.98
22.2mm (7/8")	1.33
25.4mm (1")	1.74
31.75mm (1 1/4")	2.72
35mm (1 31/82")	3.30
38.1mm (1 1/2")	3.91
40mm (1 50/87")	4.32
44.45mm (1 3/4")	5.33
45mm (1 71/92")	5.46
50.8mm (2")	6.96
57.15mm (2 1/4")	8.81
63.5mm (2 1/2")	10.88
70mm (2 65/86")	13.23
76.2mm (3")	15.67
83mm (3 19/71")	18.60
88.9mm (3 1/2")	21.33
101.6mm (4")	27.87
127mm (5")	43.54
143mm (5 46/73")	55.21
152.4mm (6")	62.71



ALUMINIUM

6082 - T6

SIZE H/W)	WEIGHT (kg/m)
12.7 x 4.763mm (1/2 x 3/16")	0.16
12.7 x 9.53mm (1/2 x 3/8")	0.32
15.875 x 3.175mm (5/8 x 1/8")	0.13
15.875 x 6.35mm (5/8 x 1/4")	0.27
15.875 x 12.7mm (5/8 x 1/2")	0.54
19.05 x 3.175mm (3/4 x 1/8")	0.16
19.05 x 4.76mm (3/4 x 3/16")	0.24
19.05 x 9.525mm (3/4 x 3/8")	0.49
19.05 x 12.7mm (3/4 x 1/2")	0.65
19.05 x 15.875mm (3/4 x 5/8")	0.81
25.4 x 3.175mm (1 x 1/8")	0.21
25.4 x 4.763mm (1 x 3/16")	0.32
25.4 x 6.35mm (1 x 1/4")	0.43
25.4 x 9.525mm (1 x 3/8")	0.65
25.4 x 12.7mm (1 x 1/2")	0.87
25.4 x 19.05mm (1 x 3/4")	1.30
28 x 25mm (1 9/88 x 63/64")	1.89
30 x 20mm (1 17/94 x 63/80")	1.62
31.75 x 6.35mm (1 1/4 x 1/4")	0.54
31.75 x 9.525mm (1 1/4 x 3/8")	0.81
31.75 x 12.7mm (1 1/4 x 1/2")	1.08
31.75 x 15.875mm (1 1/4 x 5/8")	1.36
31.75 x 19.05mm (1 1/4 x 3/4")	1.63
31.75 x 25.4mm (1 1/4 x 1")	2.17
38.1 x 3.175mm (1 1/2 x 1/8")	0.32
38.1 x 4.763mm (1 1/2 x 3/16")	0.49
38.1 x 6.35mm (1 1/2 x 1/4")	0.65
38.1 x 9.525mm (1 1/2 x 3/8")	0.98
38.1 x 19.05mm (1 1/2 x 3/4")	1.96
38.1 x 25.4mm (1 1/2 x 1")	2.61
38.1 x 31.75mm (1 1/2 x 1 1/4")	3.26

SIZE H/W)	WEIGHT (kg/m)
40 x 15mm (1 50/87 x 49/83")	1.62
40 x 20mm (1 50/87 x 63/80")	2.16
44.45 x 6.35mm (1 3/4 x 1/4")	0.76
44.45 x 9.525mm (1 3/4 x 3/8")	1.14
44.45 x 12.7mm (1 3/4 x 1/2")	1.52
44.45 x 19.05mm (1 3/4 x 3/4")	2.28
44.45 x 31.75mm (1 3/4 x 1 1/4")	3.81
44.45 x 38.1mm (1 3/4 x 1 1/2")	4.57
47.625 x 9.525mm (1 7/8 x 3/8")	1.22
50 x 30mm (1 92/95 x 1 17/94")	4.05
50.8 x 3.175mm (2 x 1/8")	0.43
50.8 x 6.35mm (2 x 1/4")	0.87
50.8 x 9.525mm (2 x 3/8")	1.30
50.8 x 12.7mm (2 x 1/2")	1.74
50.8 x 15.875mm (2 x 5/8")	2.17
50.8 x 19.05mm (2 x 3/4")	2.61
50.8 x 25.4mm (2 x 1")	3.48
50.8 x 31.7mm (2 x 1 1/4")	4.35
50.8 x 32mm (2 x 1 20/77")	4.38
50.8 x 38.1mm (2 x 1 1/2")	5.22
57.15 x 44.45mm (2 1/4 x 1 3/4")	6.85
63.5 x 4.763mm (2 1/2 x 3/16")	0.81
63.5 x 9.525mm (2 1/2 x 3/8")	1.63
63.5 x 15.875mm (2 1/2 x 5/8")	2.72
63.5 x 19.05 (2 1/2 x 3/4")	3.26
63.5 x 25.4mm (2 1/2 x 1")	4.35
63.5 x 31.75mm (2 1/2 x 1 1/4")	5.44
63.5 x 44.45mm (2 1/2 x 1 3/4")	7.62
63.5 x 50.8mm (2 1/2 x 2")	8.71
69.85 x 31.75mm (2 3/4 x 1 1/4")	5.98

FLAT BAR

BS EN 755-2



SIZE H/W	WEIGHT (kg/m)
69.85 x 63.5mm (2 3/4 x 2 1/2")	11.97
76 x 20mm (2 98/99 x 63/80")	4.10
76.1 x 15.88mm (3 x 5/8")	3.26
76.2 x 3.175mm (3 x 1/8")	0.65
76.2 x 6.35mm (3 x 1/4")	1.30
76.2 x 9.52mm (3 x 3/8")	1.96
76.2 x 9.53mm (3 x 3/8")	1.96
76.2 x 12.7mm (3 x 1/2")	2.61
76.2 x 15.88mm (3 x 5/8")	3.26
76.2 x 19.05mm (3 x 3/4")	3.91
76.2 x 25.4mm (3 x 1")	5.22
76.2 x 31.75mm (3 x 1 1/4")	6.53
76.2 x 38.1mm (3 x 1 1/2")	7.83
76.2 x 44.45mm (3 x 1 3/4")	9.14
76.2 x 50.8mm (3 x 2")	10.45
76.2 x 63.5mm (3 x 2 1/2")	13.06
80 x 8mm (3 13/87 x 23/73")	1.72
88.9 x 12.7mm (3 1/2 x 1/2")	3.04
88.9 x 15.88mm (3 1/2 x 5/8")	3.81
88.9 x 19.05mm (3 1/2 x 3/4")	4.57
88.9 x 38.1mm (3 1/2 x 1 1/2")	9.14
88.9 x 63.5mm (3 1/2 x 2 1/2")	15.24
93 x 35mm (3 43/65 x 1 31/82")	8.78
100 x 10mm (3 89/95 x 37/94")	2.7
101.6 x 3.175mm (4 x 1/8")	0.87
101.6 x 6.35mm (4 x 1/4")	1.74
101.6 x 12.7mm (4 x 1/2")	3.48
101.6 x 15.875mm (4 x 5/8")	4.35
101.6 x 19.05mm (4 x 3/4")	5.22
101.6 x 25.4mm (4 x 1")	6.96

SIZE H/W	WEIGHT (kg/m)
101.6 x 31.75mm (4 x 1 1/4")	8.71
101.6 x 32mm (4 x 1 20/77")	8.77
101.6 x 38.1mm (4 x 1 1/2")	10.45
101.6 x 44.45mm (4 x 1 3/4")	12.19
101.6 x 50.8mm (4 x 2")	13.93
101.6 x 76.2mm (4 x 3")	20.90
101.6 x 78mm (4 x 3 7/99")	21.39
103 x 63mm (4 5/91 x 2 37/77")	17.52
114.3 x 25.4mm (4 1/2 x 1")	7.83
114.3 x 31.75mm (4 1/2 x 1 1/4")	9.79
114.3 x 38.1mm (4 1/2 x 1 1/2")	11.75
114.3 x 50.8mm (4 1/2 x 2")	15.67
127 x 6.35mm (5 x 1/4")	2.17
127 x 9.525mm (5 x 3/8")	3.26
127 x 12.7mm (5 x 1/2")	4.35
127 x 15.875mm (5 x 5/8")	5.4
127 x 19.05mm (5 x 3/4")	6.53
127 x 31.75mm (5 x 1 1/4")	10.88
127 x 38.1mm (5 x 1 1/2")	13.06
127 x 44.45mm (5 x 1 1/4")	15.24
127 x 50.8mm (5 x 2")	17.41
127 x 101.6mm (5 x 4")	34.83
152.4 x 19.05mm (6 x 3/4")	7.83
152.4 x 25.4mm (6 x 1")	10.45
152.4 x 31.75mm (6 x 1 1/4")	13.06
152.4 x 38.1mm (6 x 1 1/2")	15.67
152.4 x 50.8mm (6 x 2")	20.90
152.4 x 63.5mm (6 x 2 1/2")	26.12
152.4 x 76.2mm (6 x 3")	31.35
152.4 x 101.6mm (6 x 4")	41.80





BRASS

Brass is an alloy metal that is made of copper and zinc, and the amount of copper and zinc in brass determines its properties. Brass has been used since prehistoric times and is still popular today for its bright gold like appearance. Due to brass's unique properties and its versatility, is one of the most widely used alloys, used in seemingly endless industries including automotive, aerospace, marine, naval, electrical, and plumbing sectors.

Brass is a desirable architectural alloy because of its inherent durability, corrosion resistance and aesthetic colouring. It has a variety of qualities, but all of them are robust, machinable, tough, conductive, and corrosion-resistant. Brass is one of the most extensively used alloys for decorative applications including commercial shop fittings, lights, furniture, fasteners, bathroom fixtures, locks, and electrical plugs and sockets.

Elements such as lead, tin and manganese can enhance the strength and corrosion resistance of brass, and we have several popular grades available for all applications even including naval brass which improves its corrosion resistance in sea water.

BAR SHAPES:



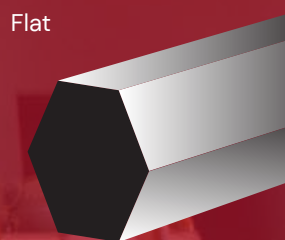
Round



Square



Flat



Hexagon

STOCKED GRADES:

- CZ112 ■ CZ114 ■ CZ121 ■ CZ132 ■
- CW602N ■ CW614N ■ CW712R ■ CW721R ■

BRASS



CZ112 - CW712R*

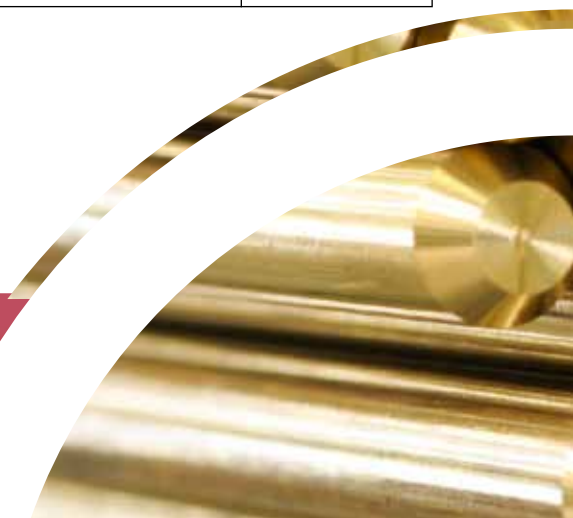
SIZE (Dia)	WEIGHT (kg/m)
6.35mm (1/4")	0.27
12.7mm (1/2")	1.07
14mm (43/78")	1.31
15.88mm (5/8")	1.68
19.05mm (3/4")	2.42
25.4mm (1")	4.31
31.75mm (1 1/4")	6.74
44.45mm (1 3/4")	13.22
50.8mm (2")	17.26
57.15mm (2 1/4")	21.81
63.5mm (2 1/2")	26.76
76.2mm (3")	38.85
88.9mm (3 1/2")	52.88
120mm (4 71/98")	96.35
127mm (5")	107.92
184.15mm (7 1/4")	226.92

CZ114 - CW721R

SIZE (Dia)	WEIGHT (kg/m)
9.525mm (3/8")	0.59
12.7mm (1/2")	1.07
15.875mm (5/8")	1.68
19.05mm (3/4")	2.42
20.64mm (13/16")	2.75
22.23mm (7/8")	3.30
25.4mm (1")	4.31
28.575mm (1 1/8")	5.46
31.75mm (1 1/4")	6.74
34.93mm (1 3/8")	8.16
38.1mm (1 1/2")	9.71
44.45mm (1 3/4")	13.22
50.8mm (2")	17.26
53.975mm (2 1/8")	19.49
57.15mm (2 1/4")	20.97
60.325mm (2 3/8")	24.35
63.5mm (2 1/2")	26.98
69.85mm (2 3/4")	32.64
76.2mm (3")	38.85
101.6mm (4")	69.07

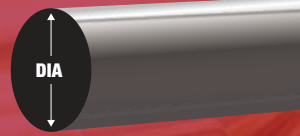
CZ121 - CW614N

SIZE (Dia)	WEIGHT (kg/m)
3mm (2/27")	0.06
3.175mm (1/8")	0.07
3.969mm (5/32")	0.10
4mm (14/89")	0.11
4.763mm (3/16")	0.15
5mm (13/66")	0.16
5.556mm (7/32")	0.20
6mm (13/55")	0.24
6.35mm (1/4")	0.27
7mm (27/98")	0.32
7.144mm (9/32")	0.34
7.938mm (5/16")	0.42
8mm (23/73")	0.43
8.731mm (11/32")	0.5
9.525mm (3/8")	0.60
10mm (13/33")	0.66
11.11mm (7/16")	0.82
12mm (43/91")	0.96
12.7mm (1/2")	1.07
13mm (43/84")	1.13
14mm (43/78")	1.31
14.288mm (9/16")	1.36
15mm (13/22")	1.50
15.875mm (5/8")	1.68
16mm (46/73")	1.71
17.463mm (11/16")	2.04
18mm (56/79")	2.16
19mm (74/99")	2.41
19.05mm (3/4")	2.42
20mm (63/80")	2.67
20.638mm (13/16")	2.85
22mm (84/97")	3.23
22.225mm (7/8")	3.30
23.813mm (15/16")	3.79
25mm (63/64")	4.18



ROUND BAR

BS EN 12163* / BS EN 12164



CZ121 - CW614N

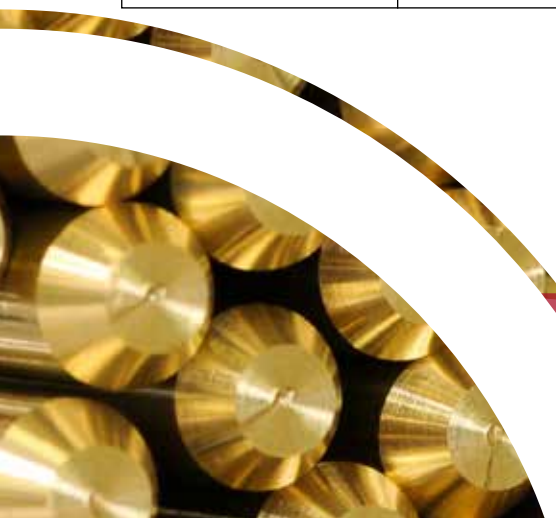
SIZE (Dia)	WEIGHT (kg/m)
25.4mm (1")	4.31
26.988mm (1 1/16")	4.87
27mm (1 6/95")	4.87
28mm (1 9/88")	5.24
28.575mm (1 1/8")	5.46
30mm (1 17/94")	6.02
31.75mm (1 1/4")	6.74
32mm (1 20/77")	6.85
33.35mm (1 31/99")	7.44
34.925mm (1 3/8")	8.16
35mm (1 31/82")	8.19
36mm (1 38/91")	8.67
38.1mm (1 1/2")	9.71
40mm (1 50/87")	10.70
41.275mm (1 5/8")	11.4
44.45mm (1 3/4")	13.22
47.625mm (1 7/8")	15.17
50mm (1 92/95")	16.72
50.8mm (2")	17.26
52mm (2 4/85")	18.09
57.15mm (2 1/4")	21.85
58mm (2 19/67")	22.51
60mm (2 25/69")	24.09
63.5mm (2 1/2")	26.98
65mm (2 52/93")	28.27
66.675mm (2 5/8")	29.74
69.85mm (2 3/4")	32.64
75mm (2 81/85")	37.64
76.2mm (3")	38.85
82.55mm (3 1/4")	45.6
88.9mm (3 1/2")	52.88
92.075mm (3 5/8")	56.73
95.25mm (3 3/4")	60.71
100mm (3 89/95")	66.91
101.6mm (4")	69.07

CZ121 - CW614N

SIZE (Dia)	WEIGHT (kg/m)
107.95mm (4 1/4")	77.97
110mm (4 1/3")	80.96
114.3mm (4 1/2")	87.42
115mm (4 48/91")	88.49
120mm (4 71/98")	96.35
127mm (5")	107.92
130mm (5 11/93")	113.08
133.35mm (5 1/4")	118.99
130.594mm (5 1/2")	113.08
140mm (5 43/84")	131.15
150mm (5 67/74")	150.56
165.1mm (6 1/2")	182.39
170mm (6 61/88")	193.38
177.8mm (7")	211.54
180mm (7 7/81")	216.80
190.5mm (7 1/2")	242.84
200mm (7 7/8")	267.66
203.2mm (8")	276.29
209.55mm (8 1/4")	293.83
210mm (8 19/71")	295.09
228.6mm (9")	349.68
250mm (9 75/89")	418.22
254mm (10")	431.71
279.4mm (11")	522.37

CZ132 - CW602N

SIZE (Dia)	WEIGHT (kg/m)
15.88mm (5/8")	1.68
20mm (63/80")	2.67
22.225mm (7/8")	3.30
23mm (67/74")	3.54
25.4mm (1")	4.31
28.575mm (1 1/8")	5.46
34.925mm (1 3/8")	8.16
41.28mm (1 5/8")	11.40
44.45mm (1 3/4")	13.22
50.8mm (2")	17.26
57.15mm (2 1/4")	21.85
63.5mm (2 1/2")	26.98



BRASS

SQUARE BAR

CZ121 - CW614N

SIZE (H/W)	WEIGHT (kg/m)
3.175mm (1/8")	0.08
4mm (14/89")	0.13
4.76mm (3/16")	0.19
5mm (13/66")	0.21
6.35mm (1/4")	0.34
7.938mm (5/16")	0.54
9.525mm (3/8")	0.77
10mm (13/33")	0.85
11.113mm (7/16")	1.05
12.7mm (1/2")	1.37
15.875mm (5/8")	2.14
19.05mm (3/4")	3.09
20mm (63/80")	3.40
22.225mm (7/8")	4.20
25.4mm (1")	5.49
30mm (1 17/94")	7.66
31.75mm (1 1/4")	8.58
34.925mm (1 3/8")	10.39
38.1mm (1 1/2")	12.36
41.275mm (1 5/8")	14.51
44.45mm (1 3/4")	16.83
50mm (1 92/95")	21.3
50.8mm (2")	21.98
57.15mm (2 1/4")	27.76
63.5mm (2 1/2")	34.27
70mm (2 65/86")	41.74
76.2mm (3")	49.47
85mm (3 26/75")	61.55
105mm (4 13/97")	93.93



SQUARE / HEX BAR

BS EN 12163* / BS EN 12164

HEIGHT

WIDTH

ACROSS FLAT

HEXAGONAL BAR

CZ112 - CW712R*

CZ121 - CW614N

SIZE (A/F)	WEIGHT (kg/m)
15.24mm (3/5")	1.71
19.05mm (3/4")	2.67
20.83mm (41/50")	3.20
33.02mm (1 3/10")	8.04

SIZE (A/F)	WEIGHT (kg/m)
3.55mm (13/93")	0.09
4.763mm (3/16")	0.16
5mm (13/66")	0.18
6.35mm (1/4")	0.29
7mm (27/98")	0.36
7.938mm (5/16")	0.46
8mm (23/73")	0.47
8.23mm (23/71")	0.5
9.525mm (3/8")	0.66
10mm (37/94")	0.73
11.1mm (38/87")	0.90
11.113mm (7/16")	0.91
12mm (43/91")	1.06
12.7mm (1/2")	1.19
13mm (43/84")	1.24
13.335mm (21/40")	1.31
14mm (43/78")	1.44
14.288mm (9/16")	1.50
15mm (49/83")	1.66
15.24mm (3/5")	1.71
15.875mm (5/8")	1.85
16mm (46/73")	1.88
17mm (2/3")	2.13
17.46mm (11/16")	2.24
18mm (56/79")	2.39
19mm (74/99")	2.66
19.05mm (3/4")	2.67
20mm (63/80")	2.95
20.638mm (13/16")	3.14
20.828mm (41/50")	3.20
22mm (84/97")	3.57
22.225mm (7/8")	3.64

SIZE (A/F)	WEIGHT (kg/m)
23.37mm (23/25")	4.03
24mm (86/91")	4.25
25.4mm (1")	4.76
25.65mm (1 1/99")	4.85
26.988mm (1 1/16")	5.37
27mm (1 6/95")	5.37
27.94mm (1 1/10")	5.76
28.575mm (1 1/8")	6.02
30mm (1 17/94")	6.64
30.48mm (1 1/5")	6.85
31.75mm (1 1/4")	7.43
32mm (1 20/77")	7.55
33.02mm (1 3/10")	8.04
34.925mm (1 3/8")	9
36mm (1 38/91")	9.56
37.59mm (1 12/25")	10.42
38.1mm (1 1/2")	10.71
41mm (1 43/70")	12.40
42.42mm (1 65/97")	13.27
46mm (1 73/90")	15.61
47.24mm (1 43/50")	16.46
50mm (1 92/95")	18.44
50.8mm (2")	19.04
52.07mm (2 1/20")	20.00
55mm (2 1/6")	22.31
55.88mm (2 1/5")	23.03
60mm (2 25/69")	26.56
70mm (2 65/86")	36.15
90.17mm (3 11/20")	59.99

CZ114 - CW721R

SIZE (A/F)	WEIGHT (kg/m)
15.24mm (3/5")	1.71
22.23mm (7/8")	3.64
27mm (1 1/16")	5.37
27.94mm (1 1/10")	5.76
31.75mm (1 1/4")	7.43
33.02mm (1 3/10")	8.04
44.45mm (1 3/4")	14.57
50.8mm (2")	19.04
57.15mm (2 1/4")	24.09

CZ132 - CW602N

SIZE (A/F)	WEIGHT (kg/m)
30.48mm (1 1/5")	6.85
33.02mm (1 3/10")	8.04
38.1mm (1 1/2")	10.7
50.8mm (2")	19.04
60mm (2 25/69")	26.56
65mm (2 52/93")	31.17
75mm (2 81/85")	41.50



BRASS

CZ121 - CW164N

SIZE (H/W)	WEIGHT (kg/m)
6.35mm x 1.588mm (1/4 x 1/16")	0.09
6.35mm x 3.175mm (1/4 x 1/8")	0.17
9.525 x 3.175mm (3/8 x 1/8")	0.26
9.525 x 4.763mm (3/8 x 3/16")	0.39
9.525 x 6.35mm (3/8 x 1/4")	0.52
25mm x 3.175mm (3/8 x 1/8")	0.25
25mm x 4.763mm (3/8 x 3/16")	0.38
25mm x 6.35mm (3/8 x 1/4")	0.51
10mm x 5mm (37/94 x 13/66")	0.42
12.7mm x 3.175mm (1/2 x 1/8")	0.34
12.7mm x 4.76mm (1/2 x 3/16")	0.51
12.7mm x 6.35mm (1/2 x 1/4")	0.68
12.7mm x 9.525mm (1/2 x 3/8")	1.03
15.875mm x 3.175mm (5/8 x 1/8")	0.42
15.875mm x 4.763mm (5/8 x 3/16")	0.64
15.875mm x 6.35mm (5/8 x 1/4")	0.85
15.875mm x 9.525mm (5/8 x 3/8")	1.28
15.88mm x 6.35mm (5/8 x 1/4")	0.85
19.05mm x 3.175mm (3/4 x 1/8")	0.51
19.05mm x 4.76mm (3/4 x 3/16")	0.77
19.05mm x 6.35mm (3/4 x 1/4")	1.03
19.05mm x 9.525mm (3/4 x 3/8")	1.54
19.05mm x 12.7mm (3/4 x 1/2")	2.06
25.4mm x 3.175mm (1 x 1/8")	0.68
25.4mm x 4.763mm (1 x 3/16")	1.03
25.4mm x 6.35mm (1 x 1/4")	1.37
25.4mm x 7.938mm (1 x 5/16")	1.71
25.4mm x 9.525mm (1 x 3/8")	2.06

SIZE (H/W)	WEIGHT (kg/m)
25.4mm x 12.7mm (1 x 1/2")	2.74
25.4mm x 15.875mm (1 x 5/8")	3.43
25.4mm x 19.05mm (1 x 3/4")	4.12
31.75mm x 3.175mm (1 1/4 x 1/8")	0.85
31.75mm x 4.762mm (1 1/4 x 3/16")	1.28
31.75mm x 6.35mm (1 1/4 x 1/4")	1.71
31.75mm x 7.938mm (1 1/4 x 5/16")	2.14
31.75mm x 9.525mm (1 1/4 x 3/8")	2.57
31.75mm x 12.7mm (1 1/4 x 1/2")	3.43
31.75mm x 15.875mm (1 1/4 x 5/8")	4.29
31.75mm x 19.05mm (1 1/4 x 3/4")	5.15
31.75mm x 25.4mm (1 1/4 x 1")	6.87
38.1mm x 3.175mm (1 1/2 x 1/8")	1.03
38.1mm x 4.763mm (1 1/2 x 3/16")	1.54
38.1mm x 6.35mm (1 1/2 x 1/4")	2.06
38.1mm x 7.938mm (1 1/2 x 5/16")	2.57
38.1mm x 9.525mm (1 1/2 x 3/8")	3.09
38.1mm x 12.7mm (1 1/2 x 1/2")	4.12
38.1mm x 15.875mm (1 1/2 x 5/8")	5.15
38.1mm x 19.05mm (1 1/2 x 3/4")	6.18
38.1mm x 25.4mm (1 1/2 x 1")	8.24
44.45mm x 3.175mm (1 3/4 x 1/8")	1.20
44.45mm x 6.35mm (1 3/4 x 1/4")	2.40
44.45mm x 12.7mm (1 3/4 x 1/2")	4.81
44.45mm x 19.05mm (1 3/4 x 3/4")	7.21
44.45mm x 25.4mm (1 3/4 x 1")	9.61
50.8mm x 3.175mm (2 x 1/8")	1.37
50.8mm x 4.76mm (2 x 3/16")	2.06

sales@ppnonferrous.co.uk



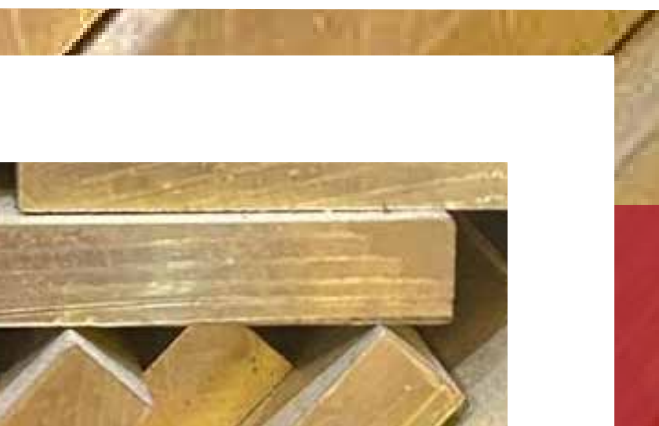
FLAT BAR

BS EN 12167



SIZE (H/W)	WEIGHT (kg/m)
50.8mm x 6.35mm (2 x 1/4")	2.74
50.8mm x 7.938mm (2 x 5/16")	3.43
50.8mm x 9.525mm (2 x 3/8")	4.12
50.8mm x 12.7mm (2 x 1/2")	5.49
50.8mm x 15.875mm (2 x 5/8")	6.87
50.8mm x 19.05mm (2 x 3/4")	8.24
50.8mm x 25.4mm (2 x 1")	10.99
57.15mm x 6.35mm (2 1/4 x 1/4")	3.09
57.15mm x 19.05mm (2 1/4 x 3/4")	9.27
57.15mm x 31.75mm (2 1/4 x 1 1/4")	15.46
63.5mm x 6.35mm (2 1/2 x 1/4")	3.43
63.5mm x 9.525mm (2 1/2 x 3/8")	5.15
63.5mm x 12.7mm (2 1/2 x 1/2")	6.87
63.5mm x 19.05mm (2 1/2 x 3/4")	10.30
63.5mm x 25.4mm (2 1/2 x 1")	13.74
63.5mm x 31.75mm (2 1/2 x 1 1/4")	17.17
63.5mm x 44.45mm (2 1/2 x 1 3/4")	24.04
63.5mm x 50.8mm (2 1/2 x 2")	27.48
76.2mm x 3.175mm (3 x 1/8")	2.06
76.2mm x 6.35mm (3 x 1/4")	4.12
76.2mm x 12.7mm (3 x 1/2")	8.24
76.2mm x 19.05mm (3 x 3/4")	12.36
76.2mm x 25.4mm (3 x 1")	16.49

SIZE (H/W)	WEIGHT (kg/m)
76.2mm x 38.1mm (3 x 1 1/2")	24.73
76.2mm x 50.8mm (3 x 2")	32.98
76.2mm x 63.5mm (3 x 2 1/2")	41.22
88.9mm x 38.1mm (3 1/2 x 1 1/2")	28.85
88.9mm x 50.8mm (3 1/2 x 2")	38.47
88.9mm x 63.5mm (3 1/2 x 2 1/2")	48.09
101.6mm x 3.175mm (4 x 1/8")	2.748
101.6mm x 12.7mm (4 x 1/2")	10.99
101.6mm x 19.05mm (4 x 3/4")	16.49
101.6mm x 25.4mm (4 x 1")	21.98
101.6mm x 50.8mm (4 x 2")	43.97
101.6mm x 76.2mm (4 x 3")	65.96
152.4mm x 25.4mm (6 x 1")	32.98





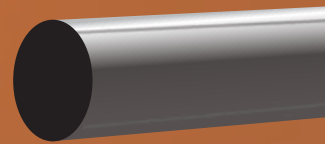
COPPER

Copper is a versatile metal with many useful properties. In fact, it is the world's third most used metal after gold and silver. Copper is a ductile and malleable metal with excellent thermal and electrical conductivity, widely used in building construction, electrical grids, electronic products, industrial machinery and transportation vehicles. Copper is also used in various applications such as electrical wiring, plumbing, currency, jewellery, and architecture.

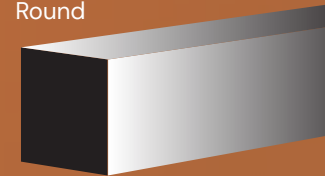
High conductivity copper alloys that have excellent electrical conductivity properties. These alloys are commonly used in various industries such as electronics, power generation, and telecommunications, with copper bars used in applications requiring high strength and electrical conductivity, such as electrical transmission systems and power distribution.

Our range of copper bars are available in a range of shapes, sizes, and grades depending on their intended application, in addition to copper being a desirable material for commercial applications and architectural Fittings.

BAR SHAPES:



Round



Square



Flat

STOCKED GRADES:

■ C101 ■ C103 ■ CW004A ■ CW008A ■

COPPER

ROUND BAR

C101 - CW004A

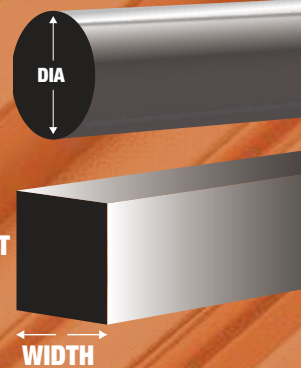
SIZE (Dia)	WEIGHT (kg/m)
3.18mm (1/8")	0.07
4.763mm (3/16")	0.16
6mm (13/55")	0.25
6.35mm (1/4")	0.28
7.938mm (5/16")	0.44
8.23mm (23/71")	0.47
9.525mm (3/8")	0.63
10mm (13/33")	0.70
12mm (43/91")	1.01
12.7mm (1/2")	1.13
14mm (43/78")	1.37
15.875mm (5/8")	1.76
16mm (46/73")	1.80
19.05mm (3/4")	2.55
20mm (63/80")	2.81
22.225mm (7/8")	3.46
25mm (63/64")	4.39
25.4mm (1")	4.54
28.58mm (1 1/8")	5.74
30mm (1 17/94")	6.33
31.75mm (1 1/4")	7.05
38.1mm (1 1/2")	10.21
40mm (1 50/87")	11.18
41.275mm (1 5/8")	11.98
44.45mm (1 3/4")	13.90
45mm (1 71/92")	14.25
50.8mm (2")	18.16
57.15mm (2 1/4")	22.98
63.5mm (2 1/2")	28.37
69.85mm (2 3/4")	34.33
76.2mm (3")	40.86
101.6mm (4")	72.64
114.3mm (4 1/2")	91.32
127mm (5")	112.74
139.7mm (5 1/2")	136.42
152.4mm (6")	162.35
165.1mm (6 1/2")	190.53
177.8mm (7")	220.98
190.5mm (7 1/2")	253.67
200mm (7 7/8")	279.6
250mm (9 75/89")	439.82

C103 - CW008A

SIZE (Dia)	WEIGHT (kg/m)
6mm (13/55")	0.25
10mm (13/33")	0.70
12.7mm (1/2")	1.13
15.875mm (5/8")	1.76
19.05mm (3/4")	2.54
22mm (84/97")	3.40
25.4mm (1")	4.51
31.75mm (1 1/4")	7.05
37mm (1 37/81")	9.63
38.1mm (1 1/2")	10.21
44.45mm (1 3/4")	13.81
47.625mm (1 7/8")	15.96
50.8mm (2")	18.04
57.15mm (2 1/4")	22.83
63.5mm (2 1/2")	28.19
69.85mm (2 3/4")	34.10
76.2mm (3")	40.59
82.55mm (3 1/4")	47.95
88.9mm (3 1/2")	55.24
95.25mm (3 3/4")	63.84
101.6mm (4")	72.16
107.95mm (4 1/4")	82.00
114.3mm (4 1/2")	91.32
120.65mm (4 3/4")	102.43
127mm (5")	112.74
130mm (5 11/93")	118.92
139.7mm (5 1/2")	136.42
152.4mm (6")	163.44
165.1mm (6 1/2")	190.53
177.8mm (7")	220.98
180mm (7 7/81")	228.00
190.5mm (7 1/2")	253.67
200mm (7 7/8")	279.60

ROUND / SQUARE BAR

BS EN 1652 / EN 13601



SQUARE BAR

C101 - CW004A

SIZE (H/W)	WEIGHT (kg/m)
6mm (13/55")	0.32
8mm (23/73")	0.57
9.525mm (3/8")	0.81
10mm (13/33")	0.89
12.7mm (1/2")	1.44
15.875mm (5/8")	2.25



COPPER

C101 - CW004A

SIZE (H/W)	WEIGHT (kg/m)
9.525mm x 6.35mm (3/8 x 1/4")	0.54
12.7mm x 4.763mm (1/2 x 3/16")	0.54
12.7mm x 6.35mm (1/2 x 1/4")	0.72
15.875mm x 9.525mm (5/8 x 3/8")	1.35
19.05mm x 6.35mm (3/4 x 1/4")	1.08
20mm x 3mm (63/80 x 11/93")	0.53
20mm x 4mm (63/80 x 14/89")	0.71
20mm x 5mm (63/80 x 13/66")	0.89
20mm x 6mm (63/80 x 17/72")	1.07
20mm x 10mm (63/80 x 37/94")	1.79
25mm x 3mm (63/64 x 11/93")	0.67
25mm x 5mm (63/64 x 13/66")	1.12
25mm x 6mm (63/64 x 17/72")	1.34
25mm x 10mm (63/64 x 37/94")	2.24
25.4mm x 3.175mm (1 x 1/8")	0.72
25.4mm x 6.35mm (1 x 1/4")	1.44
25.4mm x 19.05mm (1 x 3/4")	4.33

SIZE (H/W)	WEIGHT (kg/m)
30mm x 3mm (1 17/94 x 11/93")	0.80
30mm x 5mm (1 17/94 x 13/66")	1.34
30mm x 6mm (1 17/94 x 17/72")	1.6
30mm x 8mm (1 17/94 x 23/73")	2.15
30mm x 10mm (1 17/94 x 37/94")	2.68
31.75mm x 3.175mm (1 1/4 x 1/8")	0.90
31.75mm x 6.35mm (1 1/4 x 1/4")	1.80
31.75mm x 12.7mm (1 1/4 x 1/2")	3.61
38.1mm x 3.175mm (1 1/2 x 1/8")	1.08
38.1mm x 4.763mm (1 1/2 x 3/16")	1.62
38.1mm x 9.525mm (1 1/2 x 3/8")	3.25
38.1mm x 12.7mm (1 1/2 x 1/2")	4.33
38.1mm x 15.875mm (1 1/2 x 5/8")	5.41
38.1mm x 25.4mm (1 1/2 x 1")	8.67

FLAT BAR

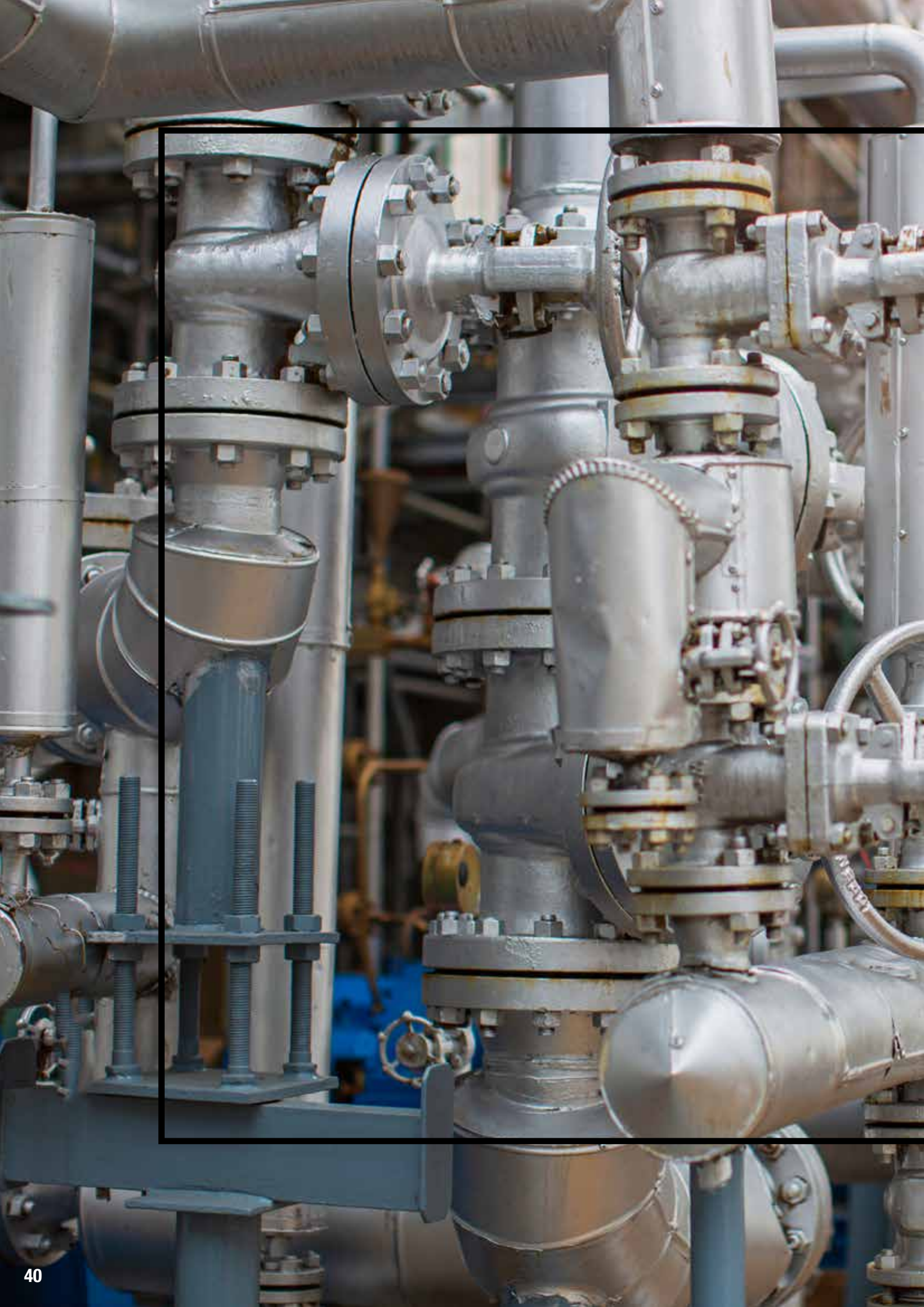
BS EN 1652 / BS EN 13601



SIZE (H/W)	WEIGHT (kg/m)
40mm x 3mm (1 50/87 x 11/93")	1.07
40mm x 5mm (1 50/87 x 13/66")	1.78
40mm x 6mm (1 50/87 x 17/72")	2.14
40mm x 10mm (1 50/87 x 37/94")	3.58
44.45mm x 4.763mm (1 3/4 x 3/16")	1.89
50mm x 3mm (1 92/95 x 11/93")	1.34
50mm x 5mm (1 92/95 x 13/66")	2.23
50mm x 6mm (1 92/95 x 17/72")	2.67
50mm x 10mm (1 92/95 x 37/94")	4.48
50.8mm x 6.35mm (2 x 1/4")	2.89
50.8mm x 9.525mm (2 x 3/8")	4.33
50.8mm x 12.7mm (2 x 1/2")	5.78
50.8mm x 15.875mm (2 x 5/8")	7.22
50.8mm x 19.05mm (2 x 3/4")	8.67
50.8mm x 25.4mm (2 x 1")	11.50
50.8mm x 31.75mm (2 x 1 1/4")	14.45
60mm x 3mm (2 25/69 x 11/93")	1.60
60mm x 5mm (2 25/69 x 13/66")	2.67
60mm x 6mm (2 25/69 x 17/72")	3.21
60mm x 10mm (2 25/69 x 37/94")	5.35
60mm x 16mm (2 25/69 x 46/73")	8.60

SIZE (H/W)	WEIGHT (kg/m)
63.5mm x 4.763mm (2 1/2 x 3/16")	2.71
63.5mm x 6.35mm (2 1/2 x 1/4")	3.61
76.2mm x 9.525mm (3 x 3/8")	6.50
76.2mm x 12.7mm (3 x 1/2")	8.67
76.2mm x 25.4mm (3 x 1")	17.25
80mm x 3mm (3 13/87 x 11/93")	2.14
80mm x 10mm (3 13/87 x 37/94")	7.16
100mm x 3mm (3 89/95 x 11/93")	2.67
100mm x 5mm (3 89/95 x 13/66")	4.46
100mm x 6mm (3 89/95 x 17/72")	5.34
100mm x 10mm (3 89/95 x 37/94")	8.91
101.6mm x 25.4mm (4 x 1")	23
100mm x 60mm (3 89/95 x 2 25/69")	53.76
127mm x 25.4mm (5 x 1")	28.75
152.4mm x 25.4mm (6 x 1")	34.50
200mm x 10mm (7 7/8 x 13/33")	17.92





BRONZE

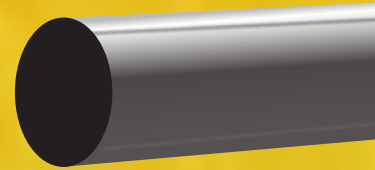
We have stocks of three types of bronze, aluminium bronze, leaded bronze and phosphor bronze. Whilst they are all alloys of copper, they offer different physical and mechanical advantages and are used in various applications due to their unique properties.

Aluminium bronze is an alloy of copper, aluminium, and sometimes nickel. It is known for its high strength, corrosion resistance, and excellent resistance to wear and fatigue and is commonly used in the marine sector, oil and petrochemical industries (non-sparking environments), and in the manufacture of valves and fasteners.

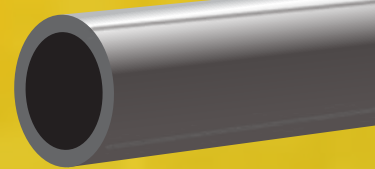
Leaded bronze is an alloy of copper, tin, and mainly lead. It is known for its excellent machinability, wear resistance, good load carrying capacity and thermal conductivity and is commonly used in the manufacture of bushes, bearings, and wear plates.

Phosphor bronze is an alloy of copper, tin, and a small amount of phosphorus. It is known for its high fatigue resistance, wear resistance, and excellent corrosion resistance and is commonly used in the manufacture of bearings, sleeves, thrust washers, and gears.

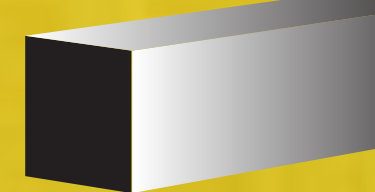
BAR SHAPES:



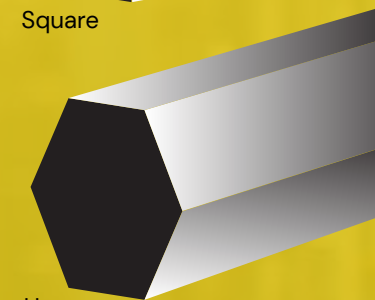
Round



Hollow



Square



Hexagon

STOCKED GRADES:

- AB2 ■ CA104 ■ CC333G ■ CC493K ■ CW307G ■ CC483K ■ CW451K ■ PB102 ■
- SAE660 ■

ALUMINIUM BRONZE

AB2 - CC333G

SIZE (OD x ID)	WEIGHT (kg/m)
52mm x 18mm (2 4/85 x 56/79")	14.7
52mm x 23mm (2 4/85 x 67/74")	13.9
52mm x 28mm (2 4/85 x 1 9/88")	11.9
52mm x 38mm (2 4/85 x 1 49/99")	7.8
57mm x 33mm (2 21/86 x 1 29/97")	13.4
57mm x 43mm (2 21/86 x 1 61/88")	9.3
62mm x 23mm (2 41/93 x 67/74")	20.5
62mm x 28mm (2 41/93 x 1 9/88")	18.36
62mm x 38mm (2 41/93 x 1 49/99")	14.8
67mm x 28mm (2 44/69 x 1 9/88")	23.6
67mm x 33mm (2 44/69 x 1 29/97")	21
67mm x 38mm (2 44/69 x 1 49/99")	18.8
67mm x 43mm (2 44/69 x 1 61/88")	17
72mm x 28mm (2 81/97 x 1 9/88")	27.2
72mm x 43mm (2 81/97 x 1 61/88")	20.01
72mm x 48mm (2 81/97 x 1 81/91")	18.7
72mm x 58mm (2 81/97 x 2 19/67")	11.3
77mm x 33mm (3 3/95 x 1 29/97")	30.7
77mm x 58mm (3 3/95 x 2 19/67")	15.9
82mm x 28mm (3 21/92 x 1 9/88")	35.64
82mm x 38mm (3 21/92 x 1 49/99")	32.7
82mm x 43mm (3 21/92 x 1 61/88")	29.25
82mm x 48mm (3 21/92 x 1 81/91")	26.52
82mm x 58mm (3 21/92 x 2 19/67")	21.8
82mm x 68mm (3 21/92 x 2 65/96")	13
92mm x 38mm (3 51/82 x 1 49/99")	44.2
92mm x 48mm (3 51/82 x 1 81/91")	38.1
92mm x 58mm (3 51/82 x 2 19/67")	31.5
97mm x 58mm (3 77/94 x 2 19/67")	37.4
97mm x 78mm (3 77/94 x 3 7/99")	20.6

HOLLOW BAR

BS EN 1982



SIZE (OD x ID)	WEIGHT (kg/m)
102mm x 38mm (4 1/64 x 1 49/99")	53.76
102mm x 48mm (4 1/64 x 1 81/91")	51
102mm x 58mm (4 1/64 x 2 19/67")	43.5
102mm x 68mm (4 1/64 x 2 65/96")	34.68
102mm x 78mm (4 1/64 x 3 7/99")	26.7
112mm x 38mm (4 34/83 x 1 49/99")	69.5
112mm x 48mm (4 34/83 x 1 81/91")	77.8
112mm x 68mm (4 34/83 x 2 65/96")	50.6
112mm x 78mm (4 34/83 x 3 7/99")	40
112mm x 88mm (4 34/83 x 3 46/99")	29.7
122mm x 58mm (4 53/66 x 2 19/67")	69.12
122mm x 68mm (4 53/66 x 2 65/96")	65.2
122mm x 88mm (4 53/66 x 3 46/99")	44.2
132mm x 78mm (5 13/66 x 3 7/99")	70.1
132mm x 88mm (5 13/66 x 3 46/99")	58.08
132mm x 97mm (5 13/66 x 3 77/94")	49.6
132mm x 108mm (5 13/66 x 4 25/99")	37.1
142mm x 78mm (5 49/83 x 3 7/99")	87.1
142mm x 98mm (5 49/83 x 3 85/99")	63.36
142mm x 108mm (5 49/83 x 4 25/99")	52.6
142mm x 118mm (5 49/83 x 4 51/79")	41.1
152mm x 78mm (5 63/64 x 3 7/99")	105.3
152mm x 118mm (5 63/64 x 4 51/79")	59.4
158mm x 110mm (6 15/68 x 4 32/97")	77.19
160mm x 107mm (6 29/97 x 4 17/80")	84.91
172mm x 98mm (6 71/92 x 3 85/99")	119.88
183mm x 147mm (7 17/83 x 5 63/80")	71.28
202mm x 138mm (7 81/85 x 5 42/97")	134.6
203mm x 157mm (7 98/99 x 6 17/94")	99.36
222mm x 118mm (8 57/77 x 4 51/79")	212.17
223mm x 157mm (8 53/68 x 6 17/94")	150.49
232mm x 178mm (9 13/97 x 7 1/99")	136.9
236mm x 174mm (9 23/79 x 6 74/87")	152.53



ALUMINIUM BRONZE

ROUND BAR

AB2 - CC333G*

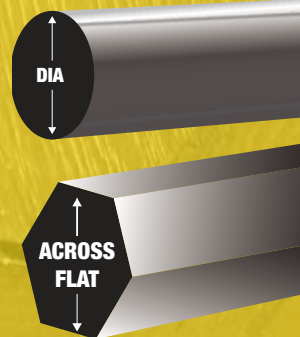
SIZE (Dia)	WEIGHT (kg/m)
52mm (2 4/85")	16.70
57mm (2 21/86")	20.10
62mm (2 41/93")	23.80
65mm (2 52/93")	25.35
67mm (2 44/69")	26.93
72mm (2 81/97")	32.10
77mm (3 3/95")	35.57
82mm (3 21/92")	40.34
87mm (3 37/87")	46.80
92mm (3 51/82")	52.30
97mm (3 77/94")	58.20
101.6mm (4")	61.94
102mm (4 1/64")	62.42
112mm (4 34/83")	75.27
122mm (4 53/66")	96.00
132mm (5 13/66")	107.80
142mm (5 49/83")	124.70
152mm (5 63/64")	138.63
162mm (6 31/82")	166.30
172mm (6 71/92")	183.00
182mm (7 16/97")	209.40
202mm (7 81/85")	252.30
203mm (8")	253.55
223mm (8 53/68")	307.50
232mm (9 13/97")	332.90
254mm (10")	399.00
304mm (11 92/95")	571.50
404mm (15 67/74")	979.36

CA104 - CW307G

SIZE (Dia)	WEIGHT (kg/m)
12.7mm (1/2")	0.96
15.875mm (5/8")	1.50
19.05mm (3/4")	2.16
20.65mm (7/4/91")	2.53
22mm (84/97")	2.88
22.225mm (7/8")	2.94
25.4mm (1")	3.84
28.575mm (1 1/8")	4.86
31.75mm (1 1/4")	6.00
34.925mm (1 3/8")	7.26
38.1mm (1 1/2")	8.64
41.275mm (1 5/8")	10.14
44.45mm (1 3/4")	11.76
50.8mm (2")	15.33
53.975mm (2 1/8")	17.34
57.15mm (2 1/4")	19.44
60mm (2 25/69")	21.43
63.5mm (2 1/2")	24.00
65mm (2 52/93")	25.15
70mm (2 65/86")	29.17
72mm (2 81/97")	30.86
76.2mm (3")	34.56
82mm (3 21/92")	40.03
82.55mm (3 1/4")	40.56
88.9mm (3 1/2")	47.05
91mm (3 53/91")	49.29
101.6mm (4")	61.45
102mm (4 1/64")	61.93
112mm (4 34/83")	74.67
114.3mm (4 1/2")	77.77
127mm (5")	96.02
133.35mm (5 1/4")	105.86
139.7mm (5 1/2")	116.18
152.4mm (6")	138.27
158.75mm (6 1/4")	150.03
165.1mm (6 1/2")	162.27
177.8mm (7")	188.20
190.5mm (7 1/2")	216.04
203mm (8")	245.33
203.2mm (8")	245.81
228.6mm (9")	311.10
241.3mm (9 1/2")	346.63
257.175mm (10 1/8")	393.74
279.4mm (11")	464.74
307.975mm (12 1/8")	564.66
350mm (13 53/68")	729.28

ROUND / HEX BAR

BS EN 1982* / BS EN12163



HEXAGONAL BAR

CA104 - CW307G

SIZE (A/F)	WEIGHT (kg/m)
17mm (2/3")	1.90
19mm (3/4")	2.37
24mm (17/18")	3.78
27mm (1 1/16")	4.78
30mm (1 17/94")	5.90
36mm (1 38/91")	8.50
55mm (2 1/6")	19.85
65mm (2 52/93")	27.73



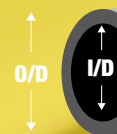
LEADED BRONZE

RG7 - CC493K - SAE660

SIZE (OD x ID)	WEIGHT (kg/m)
25.4mm x 12.7mm (1 x 1/2")	3.39
25.4mm x 19.1mm (1 x 3/4")	1.96
26mm x 14mm (1 2/85 x 43/78")	3.36
31mm x 12mm (1 15/68 x 43/91")	5.73
31mm x 14mm (1 15/68 x 43/78")	5.36
31mm x 19mm (1 15/68 x 74/99")	4.20
36mm x 14mm (1 38/91 x 43/78")	7.71
36mm x 19mm (1 38/91 x 74/99")	6.55
36mm x 24mm (1 38/91 x 86/91")	5.05
38.1mm x 31.8mm (1 1/2 x 1 25/99")	3.08
41mm x 14mm (1 43/70 x 43/78")	10.41
41mm x 19mm (1 43/70 x 74/99")	9.25
41mm x 24mm (1 43/70 x 86/91")	7.75
41mm x 29mm (1 43/70 x 1 14/99")	5.89
44.5mm x 25.4mm (1 73/97 x 1")	9.36
46mm x 14mm (1 3/4 x 1")	13.46
46mm x 19mm (1 73/90 x 74/99")	12.30
46mm x 24mm (1 73/90 x 86/91")	10.80
46mm x 29mm (1 73/90 x 1 14/99")	8.94
51mm x 19mm (2 x 3/4")	15.71
51mm x 24mm (2 x 86/91")	14.20
51mm x 29mm (2 x 1 14/99")	12.34
51mm x 34mm (2 x 1 22/65")	10.13
51mm x 39mm (2 x 1 53/99")	7.57
56mm x 24mm (2 17/83 x 86/91")	17.95
56mm x 29mm (2 17/83 x 1 14/99")	16.09
56mm x 34mm (2 17/83 x 1 22/65")	13.88
57.2mm x 44.5mm (2 1/4 x 1 3/4")	9.05
57.2mm x 50.8mm (2 1/4 x 2")	4.84
61mm x 24mm (2 2/5 x 86/91")	22.05
61mm x 29mm (2 2/5 x 1 14/99")	20.19
61mm x 39mm (2 2/5 x 1 53/99")	15.43
61mm x 39mm (2 2/5 x 1 53/99")	15.43
61mm x 44mm (2 2/5 x 1 52/71")	12.51
61mm x 49mm (2 2/5 x 1 92/99")	9.25
63.5mm x 50.8mm (2 1/2 x 2")	10.18
66mm x 24mm (2 3/5 x 86/91")	26.51
66mm x 29mm (2 3/5 x 1 14/99")	24.65
66mm x 34mm (2 3/5 x 1 22/65")	22.44
66mm x 39mm (2 3/5 x 1 53/99")	19.88
66mm x 44mm (2 3/5 x 1 52/71")	16.97
66mm x 49mm (2 3/5 x 1 92/99")	13.71

SIZE (OD x ID)	WEIGHT (kg/m)
69.9mm x 50.8mm (2 3/4 x 2")	16.16
71mm x 28mm (2 66/83 x 1 9/88")	29.85
71mm x 38mm (2 66/83 x 1 49/99")	25.22
71mm x 43mm (2 66/83 x 1 61/88")	22.38
71mm x 48mm (2 66/83 x 1 81/91")	19.19
71mm x 49mm (2 66/83 x 1 92/99")	18.51
71mm x 53mm (2 66/83 x 2 7/81")	15.65
71mm x 54mm (2 66/83 x 2 12/95")	14.90
71mm x 58mm (2 66/83 x 2 19/67")	11.76
76mm x 29mm (3 x 1 14/99")	34.61
76mm x 34mm (3 x 1 22/65")	32.40
76mm x 38mm (3 x 1 49/99")	30.38
76mm x 48mm (3 x 1 81/91")	24.35
76mm x 49mm (3 x 1 92/99")	23.67
76mm x 53mm (3 x 2 7/81")	20.80
76mm x 54mm (3 x 2 12/95")	20.05
76mm x 59mm (3 x 2 31/96")	16.09
77mm x 25mm (3 3/95 x 63/64")	37.20
81mm x 28mm (3 17/90 x 1 9/88")	40.51
81mm x 33mm (3 17/90 x 1 29/97")	38.37
81mm x 48mm (3 17/90 x 1 81/91")	29.85
81mm x 53mm (3 17/90 x 2 7/81")	26.31
81mm x 63mm (3 17/90 x 2 37/77")	18.17
82mm x 63mm (3 21/92 x 2 37/77")	19.32
82.6mm x 31.8mm (3 1/4 x 1 1/4")	40.76
86mm x 38mm (3 27/70 x 1 49/99")	41.74
86mm x 58mm (3 27/70 x 2 19/67")	28.27
86mm x 63mm (3 27/70 x 2 37/77")	24.03
86mm x 68mm (3 27/70 x 2 65/96")	19.44
87mm x 68mm (3 37/87 x 2 65/96")	20.65
88.9mm x 76.2mm (3 1/2 x 3")	14.70
91mm x 28mm (3 53/91 x 1 9/88")	52.58
91mm x 48mm (3 53/91 x 1 81/91")	41.92
91mm x 58mm (3 53/91 x 2 19/67")	34.48
92mm x 68mm (3 51/82 x 2 65/96")	26.93
92mm x 73mm (3 51/82 x 2 83/95")	21.98
95.3mm x 38.1mm (3 73/97 x 1 1/2")	53.51
95.3mm x 50.8mm (3 73/97 x 2")	45.59
96mm x 73mm (3 53/68 x 2 83/95")	27.26
101.6mm x 82.6mm (4 x 3 25/99")	24.54
101.6mm x 88.9mm (4 x 3 1/2")	16.96
102mm x 38mm (4 1/64 x 1 49/99")	62.84
102mm x 48mm (4 1/64 x 1 81/91")	56.81
102mm x 58mm (4 1/64 x 2 19/67")	49.37
102mm x 68mm (4 1/64 x 2 65/96")	40.53

HOLLOW BAR



SIZE (OD x ID) WEIGHT (kg/m)

102mm x 73mm (4 1/64 x 2 83/95")	35.59
102mm x 78mm (4 1/64 x 3 7/99")	30.29
102mm x 88mm (4 1/64 x 3 46/99")	18.65
103mm x 88mm (4 5/91 x 3 46/99")	20.09
106mm x 63mm (4 13/75 x 2 37/77")	50.96
107mm x 43mm (4 17/80 x 1 61/88")	67.33
112mm x 48mm (4 34/83 x 1 81/91")	71.81
112mm x 58mm (4 34/83 x 2 19/67")	64.38
112mm x 78mm (4 34/83 x 3 7/99")	45.30
112mm x 88mm (4 34/83 x 3 46/99")	33.66
112mm x 88mm (4 34/83 x 3 46/99")	33.66
114.3mm x 38.1mm (4 1/2 x 1 1/2")	81.44
116mm x 62mm (4 55/97 x 2 41/93")	67.41
117mm x 73mm (4 57/94 x 2 83/95")	58.63
121.5mm x 101.6mm (4 76/97 x 4")	31.13
122mm x 58mm (4 53/66 x 2 19/67")	80.79
122mm x 68mm (4 53/66 x 2 65/96")	71.96
122mm x 78mm (4 53/66 x 3 7/99")	61.72
122mm x 88mm (4 53/66 x 3 46/99")	50.07
122mm x 98mm (4 53/66 x 3 85/99")	37.03
127mm x 93mm (5 x 3 43/65")	52.46
128mm x 81mm (5 3/76 x 3 17/90")	68.89
128mm x 83mm (5 3/76 x 3 19/71")	66.59
132mm x 58mm (5 13/66 x 2 19/67")	98.61
132mm x 68mm (5 13/66 x 2 65/96")	89.77
132mm x 78mm (5 13/66 x 3 7/99")	79.53
132mm x 88mm (5 13/66 x 3 46/99")	67.89
132mm x 98mm (5 13/66 x 3 85/99")	54.84
132mm x 108mm (5 13/66 x 4 25/99")	40.39
142mm x 58mm (5 49/83 x 2 19/67")	117.82
142mm x 68mm (5 49/83 x 2 65/96")	108.99
142mm x 78mm (5 49/83 x 3 7/99")	98.75
142mm x 98mm (5 49/83 x 3 85/99")	74.06
142mm x 108mm (5 49/83 x 4 25/99")	59.61
142mm x 118mm (5 49/83 x 4 51/79")	43.76
145mm x 124mm (5 56/79 x 4 82/93")	39.62
152mm x 88mm (5 63/64 x 3 46/99")	107.72
152mm x 98mm (5 63/64 x 3 85/99")	94.68
152mm x 108mm (5 63/64 x 4 25/99")	80.23
152mm x 118mm (5 63/64 x 4 51/79")	64.38
154mm x 49mm (6 6/95 x 1 92/99")	149.49
162mm x 78mm (6 31/82 x 3 7/99")	141.39
162mm x 108mm (6 31/82 x 4 25/99")	102.25
162mm x 118mm (6 31/82 x 4 51/79")	86.40
162mm x 128mm (6 31/82 x 5 3/76")	69.15

SIZE (OD x ID) WEIGHT (kg/m)

162mm x 138mm (6 31/82 x 5 42/97")	50.49
167mm x 127mm (6 50/87 x 5")	82.48
172mm x 98mm (6 71/92 x 3 85/99")	140.13
172mm x 108mm (6 71/92 x 4 25/99")	125.68
172mm x 118mm (6 71/92 x 4 51/79")	109.83
172mm x 128mm (6 71/92 x 5 3/76")	92.58
172mm x 138mm (6 71/92 x 5 42/97")	73.92
182mm x 78mm (7 16/97 x 3 7/99")	189.64
182mm x 138mm (7 16/97 x 5 42/97")	98.75
182mm x 158mm (7 16/97 x 6 15/68")	57.23
192mm x 98mm (7 52/93 x 3 85/99")	191.19
192mm x 128mm (7 52/93 x 5 3/76")	143.63
192mm x 148mm (7 52/93 x 5 62/75")	104.92
202mm x 98mm (7 81/85 x 3 85/99")	218.82
202mm x 148mm (7 81/85 x 5 62/75")	132.55
202mm x 168mm (7 81/85 x 6 43/70")	88.23
202mm x 178mm (7 81/85 x 7 1/99")	63.96
212mm x 148mm (8 26/75 x 5 62/75")	161.59
212mm x 178mm (8 26/75 x 7 1/99")	93
222mm x 98mm (8 57/77 x 3 85/99")	278.3
222mm x 118mm (8 57/77 x 4 51/79")	248.00
222mm x 138mm (8 57/77 x 5 42/97")	212.09
222mm x 158mm (8 57/77 x 6 15/68")	170.57
232mm x 148mm (9 13/97 x 5 62/75")	223.87
232mm x 178mm (9 13/97 x 7 1/99")	155.28
232mm x 198mm (9 13/97 x 7 66/83")	102.53
242mm x 118mm (9 48/91 x 4 51/79")	313.08
242mm x 198mm (9 48/91 x 7 66/83")	135.78
252mm x 148mm (9 82/89 x 5 62/75")	291.76
252mm x 178mm (9 82/89 x 7 1/99")	223.17
252mm x 198mm (9 82/89 x 7 66/83")	170.43
262mm x 218mm (10 23/73 x 8 53/91")	148.12
272mm x 198mm (10 56/79 x 7 66/83")	243.93
272mm x 218mm (10 56/79 x 8 53/91")	185.58
272mm x 238mm (10 56/79 x 9 27/73")	121.61
282mm x 208mm (11 9/88 x 8 17/90")	254.31
304mm x 146mm (11 92/95 x 5 74/99")	498.66
304mm x 196mm (11 92/95 x 7 48/67")	378.73
304mm x 246mm (11 92/95 x 9 50/73")	223.73
354mm x 196mm (13 89/95 x 7 48/67")	609.48
354mm x 246mm (13 89/95 x 9 50/73")	454.48
354mm x 296mm (13 89/95 x 11 49/75")	264.41
404mm x 346mm (15 67/74 x 13 51/82")	305.09

LEADED BRONZE

ROUND BAR

RG7 - CC493K - SAE660

SIZE (Dia)	WEIGHT (kg/m)
13mm (43/84")	1.18
16mm (46/73")	1.79
19mm (3/4")	2.53
21mm (62/75")	3.09
25.4mm (1")	4.52
26mm (1 2/85")	4.74
31mm (1 15/68")	6.74
33mm (1 29/97")	7.63
33.249 (1 17/55")	7.75
36mm (1 38/91")	9.09
41mm (1 43/70")	11.79
46mm (1 73/90")	14.84
51mm (2")	18.24
56mm (2 17/83")	21.99
57.15mm (2 1/4")	22.90
60mm (2 25/69")	25.24
61mm (2 39/97")	26.09
66mm (2 58/97")	30.55
71mm (2 66/83")	35.35
76mm (3")	40.51
82mm (3 21/92")	47.15
83mm (3 19/71")	48.31
86mm (3 27/70")	51.87

SIZE (Dia)	WEIGHT (kg/m)
91mm (3 53/91")	58.08
96mm (3 53/68")	64.63
102mm (4 1/64")	72.97
112mm (4 34/83")	87.97
122mm (4 53/66")	104.39
127mm (5")	113.12
132mm (5 13/66")	122.20
139.7mm (5 1/2")	136.87
142mm (5 49/83")	141.42
152mm (5 63/64")	162.04
162mm (6 31/82")	184.06
172mm (6 71/92")	207.49
182mm (7 16/97")	232.31
212mm (8 26/75")	315.21
232mm (9 13/97")	377.50
242mm (9 48/91")	410.74
252mm (9 82/89")	445.39
262mm (10 23/73")	481.44
304mm (11 92/95")	648.16
313mm (12 31/96")	687.11
332mm (13 7/99")	773.06
354mm (13 89/95")	878.91
404mm (15 67/74")	1144.73

ROUND / SQUARE BAR



SQUARE BAR

CC493K - SAE660

SIZE (H/W)	WEIGHT (kg/m)
32mm (1 20/77")	9.14
42mm (1 49/75")	15.75
52mm (2 4/85")	24.14



PHOSPHOR BRONZE

CUSN12 - CC483K

SIZE (OD x ID)	WEIGHT (kg/m)
25.4mm x 19.05mm (1 x 3/4")	1.95
26mm x 14mm (1 2/85 x 43/78")	3.31
31mm x 14mm (1 15/68 x 43/78")	5.28
31.75mm x 25.4mm (1 1/4 x 1")	2.50
36mm x 19mm (1 38/91 x 74/99")	6.46
36mm x 24mm (1 38/91 x 86/91")	4.97
41mm x 14mm (1 43/70 x 43/78")	10.26
41mm x 19mm (1 43/70 x 74/99")	9.12
46mm x 14mm (1 3/4 x 1")	13.27
46mm x 24mm (1 73/90 x 86/91")	10.64
46mm x 29mm (1 73/90 x 1 14/99")	8.81
50.8mm x 44.45mm (2 x 1 3/4")	4.18
51mm x 19mm (2 x 74/99")	15.48
51mm x 24mm (2 x 86/91")	13.99
51mm x 29mm (2 x 1 14/99")	12.16
51mm x 34mm (2 x 1 22/65")	9.98
57.15mm x 47.63mm (2 1/4 x 1 7/8")	6.89
61mm x 29mm (2 2/5 x 1 14/99")	19.90
61mm x 39mm (2 2/5 x 1 53/99")	15.20
61mm x 49mm (2 2/5 x 1 92/99")	9.12
63.5mm x 44.45mm (2 1/2 x 1 3/4")	14.21
63.5mm x 50.8mm (2 1/2 x 2")	10.03
64mm x 38mm (2 40/77 x 1 49/99")	18.32
66mm x 24mm (2 3/5 x 86/91")	26.12
66mm x 29mm (2 3/5 x 1 14/99")	24.29
66mm x 39mm (2 3/5 x 1 53/99")	19.59
71mm x 28mm (2 66/83 x 1 9/88")	29.42
71mm x 48mm (2 66/83 x 1 81/91")	18.91
75mm x 49mm (2 81/85 x 1 92/99")	22.28
76mm x 38mm (3 x 1 49/99")	29.94
76mm x 59mm (3 x 2 31/96")	15.86
76.2mm x 63.5mm (3 x 2 1/2")	12.26

SIZE (OD x ID)	WEIGHT (kg/m)
77mm x 23mm (3 3/95 x 67/74")	37.32
77mm x 25mm (3 3/95 x 63/64")	36.65
77mm x 63mm (3 3/95 x 2 37/77")	13.54
81mm x 38mm (3 17/90 x 1 49/99")	35.36
81mm x 48mm (3 17/90 x 1 81/91")	29.42
81mm x 58mm (3 17/90 x 2 19/67")	22.09
82mm x 58mm (3 21/92 x 2 19/67")	23.22
82.55mm x 69.85mm (3 1/4 x 2 3/4")	13.37
91mm x 38mm (3 53/91 x 1 49/99")	47.25
91mm x 48mm (3 53/91 x 1 81/91")	41.31
91mm x 58mm (3 53/91 x 2 19/67")	33.98
92mm x 48mm (3 51/82 x 1 81/91")	42.57
92mm x 68mm (3 51/82 x 2 65/96")	26.54
95.25mm x 76.2mm (3 3/4 x 3")	22.57
96mm x 30mm (3 53/68 x 1 17/94")	57.47
96mm x 38mm (3 53/68 x 1 49/99")	53.71
102mm x 38mm (4 1/64 x 1 49/99")	61.92
102mm x 48mm (4 1/64 x 1 81/91")	55.98
102mm x 58mm (4 1/64 x 2 19/67")	48.65
102mm x 68mm (4 1/64 x 2 65/96")	39.94
102mm x 73mm (4 1/64 x 2 83/95")	35.07
102mm x 78mm (4 1/64 x 3 7/99")	29.85
105mm x 88mm (4 13/97 x 3 46/99")	22.67
112mm x 58mm (4 34/83 x 2 19/67")	63.44
112mm x 68mm (4 34/83 x 2 65/96")	54.73
112mm x 78mm (4 34/83 x 3 7/99")	44.64
112mm x 88mm (4 34/83 x 3 46/99")	33.17
114.3mm x 95.25mm (4 1/2 x 3 3/4")	27.59
122mm x 48mm (4 53/66 x 1 81/91")	86.94
122mm x 58mm (4 53/66 x 2 19/67")	79.62
122mm x 78mm (4 53/66 x 3 7/99")	60.82
122mm x 88mm (4 53/66 x 3 46/99")	49.34

HOLLOW BAR

BS EN 1982



SIZE (OD x ID)	WEIGHT (kg/m)
132mm x 48mm (5 13/66 x 1 81/91")	104.50
132mm x 68mm (5 13/66 x 2 65/96")	88.46
132mm x 88mm (5 13/66 x 3 46/99")	66.90
132mm x 98mm (5 13/66 x 3 85/99")	54.04
132mm x 108mm (5 13/66 x 4 25/99")	39.81
142mm x 58mm (5 49/83 x 2 19/67")	116.11
142mm x 68mm (5 49/83 x 2 65/96")	107.40
142mm x 78mm (5 49/83 x 3 7/99")	97.31
142mm x 88mm (5 49/83 x 3 46/99")	85.84
142mm x 98mm (5 49/83 x 3 85/99")	72.98
142mm x 108mm (5 49/83 x 4 25/99")	58.74
142mm x 118mm (5 49/83 x 4 51/79")	43.12
152mm x 98mm (5 63/64 x 3 85/99")	93.30
152mm x 108mm (5 63/64 x 4 25/99")	79.06
152mm x 118mm (5 63/64 x 4 51/79")	63.44
152mm x 128mm (5 63/64 x 5 3/76")	46.44
162mm x 88mm (6 31/82 x 3 46/99")	127.86
162mm x 98mm (6 31/82 x 3 85/99")	115.00
162mm x 128mm (6 31/82 x 5 3/76")	68.14
172mm x 68mm (6 71/92 x 2 65/96")	172.51
172mm x 98mm (6 71/92 x 3 85/99")	138.09
172mm x 128mm (6 71/92 x 5 3/76")	91.23
172mm x 138mm (6 71/92 x 5 42/97")	72.84
172mm x 148mm (6 71/92 x 5 62/75")	53.08
182mm x 98mm (7 16/97 x 3 85/99")	162.55
182mm x 118mm (7 16/97 x 4 51/79")	132.70
182mm x 128mm (7 16/97 x 5 3/76")	115.69
182mm x 138mm (7 16/97 x 5 42/97")	97.31
192mm x 78mm (7 52/93 x 3 7/99")	212.73
192mm x 128mm (7 52/93 x 5 3/76")	141.54
192mm x 148mm (7 52/93 x 5 62/75")	103.39

SIZE (OD x ID)	WEIGHT (kg/m)
202mm x 98mm (7 81/85 x 3 85/99")	215.63
202mm x 118mm (7 81/85 x 4 51/79")	185.78
202mm x 138mm (7 81/85 x 5 42/97")	150.39
202mm x 148mm (7 81/85 x 5 62/75")	130.62
202mm x 158mm (7 81/85 x 6 15/68")	109.47
212mm x 158mm (8 26/75 x 6 15/68")	138.09
212mm x 168mm (8 26/75 x 6 43/70")	115.56
212mm x 178mm (8 26/75 x 7 1/99")	91.64
222mm x 138mm (8 57/77 x 5 42/97")	209.00
222mm x 148mm (8 57/77 x 5 62/75")	189.23
222mm x 158mm (8 57/77 x 6 15/68")	168.08
232mm x 168mm (9 13/97 x 6 43/70")	176.93
232mm x 188mm (9 13/97 x 7 39/97")	127.72
242mm x 178mm (9 48/91 x 7 1/99")	185.78
242mm x 188mm (9 48/91 x 7 39/97")	160.48
242mm x 198mm (9 48/91 x 7 66/83")	133.80
252mm x 178mm (9 82/89 x 7 1/99")	219.92
252mm x 198mm (9 82/89 x 7 66/83")	167.95
262mm x 208mm (10 23/73 x 8 17/90")	175.41
272mm x 168mm (10 56/79 x 6 43/70")	316.27
272mm x 218mm (10 56/79 x 8 53/91")	182.87
304mm x 146mm (11 92/95 x 5 74/99")	491.40
304mm x 196mm (11 92/95 x 7 48/67")	373.22
304mm x 246mm (11 92/95 x 9 50/73")	220.47
308mm x 160mm (12 12/95 x 6 29/97")	478.71
354mm x 196mm (13 89/95 x 7 48/67")	600.61
354mm x 246mm (13 89/95 x 9 50/73")	447.86
354mm x 296mm (13 89/95 x 11 49/75")	260.56
379mm x 316mm (14 82/89 x 12 41/93")	302.62
404mm x 296mm (15 67/74 x 11 49/75")	522.51
435mm x 296mm (17 12/95 x 11 49/75")	702.27

PHOSPHOR BRONZE

ROUND BAR

CUSN12 - CC483K

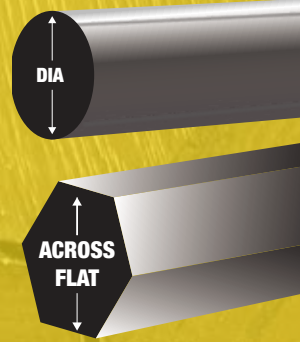
SIZE (Dia)	WEIGHT (kg/m)
13mm (43/84")	1.16
17mm (2/3")	1.99
21mm (62/75")	3.04
26mm (1 2/85")	4.67
31mm (1 15/68")	6.64
32mm (1 20/77")	7.07
36mm (1 38/91")	8.95
41mm (1 43/70")	11.61
46mm (1 73/90")	14.62
51mm (2")	17.97
56mm (2 17/83")	21.67
61mm (2 39/97")	25.71
66mm (2 58/97")	30.10
71mm (2 66/83")	34.84
76mm (3")	39.92
81mm (3 17/90")	45.34
86mm (3 27/70")	51.11
79mm (3 53/91")	57.23
92mm (3 51/82")	58.49
96mm (3 53/68")	63.69
102mm (4 1/64")	71.90
112mm (4 34/83")	86.69
122mm (4 53/66")	102.87
127mm (5")	111.47
132mm (5 13/66")	120.42
142mm (5 49/83")	139.36
152mm (5 63/64")	159.68
162mm (6 31/82")	181.38
182mm (7 16/97")	228.93
192mm (7 52/93")	254.78
202mm (7 81/85")	282.01
222mm (8 57/77")	340.62
232mm (9 13/97")	372.00
252mm (9 82/89")	438.90
262mm (10 23/73")	474.43
282mm (11 9/88")	549.63
304mm (11 92/95")	638.73
354mm (13 89/95")	866.12

PB102 - CUSN5 - CW451K

SIZE (Dia)	WEIGHT (kg/m)
3.97mm (5/32")	0.11
4.763mm (3/16")	0.15
6.35mm (1/4")	0.28
7.938mm (5/16")	0.43
9.525mm (3/8")	0.63
12.7mm (1/2")	1.12
15.875 (5/8")	1.75
19.05mm (3/4")	2.52
22.225mm (7/8")	3.43
25.4 (1")	4.48
28.575mm (1 1/8")	5.67
31.75mm (1 1/4")	7.00
34.925mm (1 3/8")	8.47
38.1mm (1 1/2")	10.09
41.275mm (1 5/8")	11.84
44.45mm (1 3/4")	13.73
47.625mm (1 7/8")	15.76
50.8mm (2")	17.93
53.975 (2 1/8")	20.25
57.15mm (2 1/4")	22.70
63.5mm (2 1/2")	28.02
69.85mm (2 3/4")	33.91
76.2mm (3")	40.35
82.55mm (3 1/4")	47.36
101.6mm (4")	71.75
114.3mm (4 1/2")	90.80
127mm (5")	112.10
152.4mm (6")	161.43

ROUND / HEX BAR

BS EN 1982



HEXAGONAL BAR

PB102 - CUSN5 - CW451K

SIZE (A/F)	WEIGHT (kg/m)
15.24mm (3/5")	1.78
19.05mm (3/4")	2.78
22.225mm (7/8")	3.78
23.368mm (23/25")	4.18
23.8mm (89/95")	4.34
25.654mm (1 1/99")	5.04
33.02mm (1 3/10")	8.35
47.244mm (1 43/50")	17.10





NICKEL ALLOY

A nickel alloy is a type of metal that contains nickel as one of its primary elements. It is typically alloyed with other metals to create a material with specific properties such as high strength, corrosion resistance and excellent performance at high temperatures.

It is often used in extreme working environments, such as those encountered in the aerospace, chemical processing, and petroleum industries but can also be used in electrical applications.

Nickel alloy 718 is composed of nickel, chromium, iron, and trace amounts of other elements such as titanium and cobalt, making it a high-strength, corrosion-resistant material that is widely used in various industries including aerospace engineering, nuclear power plants, and chemical processing.

BAR SHAPES:



Round

STOCKED GRADES:

■ ALLOY 718 ■ UNS N07718 ■

NICKEL ALLOY

ALLOY 718 - UNS N07718

SIZE (Dia)	WEIGHT (kg/m)
12.7mm (1/2")	1.04
19.05mm (3/4")	2.34
20mm (63/80")	2.58
25.4mm (1")	4.17
44.45mm (1 3/4")	12.77
50.8mm (2")	16.68

ROUND BAR



OUR SERVICES

As well as offering an extensive stock range of non-ferrous metals to a wide range of markets, we're proud to offer value-added services to all our customers, such as cutting, polishing and coating services - with next day delivery services or same day collections.

DELIVERING SERVICE



It's not just about having stock, you need to be able to get that stock picked and out to site fast. This is what we have always done and we still do everything we can to pull out all the stops for customers now.

With our network of Sales and Distribution Centres strategically located throughout the country, customer orders can be processed and delivered the next day or collected on the same day from our network.

We operate and maintain our own private fleet of delivery vans and trucks covering the UK, in addition to using third party couriers services and haulage suppliers where appropriate.

We're also committed to reducing our environmental impact and continually improving the environmental performance of our fleet of vehicles. Our Warehouse Management System automatically categorises metal orders by size and location. Smaller loads can then be delivered to the customer using our fleet of smaller trucks more suited to urban routes than larger vehicles, so customers can be assured of the environmental validity of the products supplied.



IN-HOUSE PROCESSING

Our state-of-the-art CNC bar cutting gives cutting-edge accuracy on all metals up to 20" diameter.

Our machines combine solid mechanical engineering and innovative control technology with one sole purpose - the smoothest possible saw band operation for high cutting precision.

✓ **BILLETS, ROUNDS, CUT TO LENGTH AND SPECIALS**

We also offer polishing services on a wide range of brass, copper and stainless steel, even polishing bronze and aluminium on the odd occasion.

Our machines can remove any defects and scratches from the metals, and create a smooth and shiny surface, all on a quick turnaround.

✓ **COMMERCIAL MIRROR & DULL POLISH FINISHES**

QUALITY STANDARDS

We work exceptionally hard here to ensure that we're doing the right things, in the right way. We have high standards, and with that in mind, you'll be pleased to know that we have a number of industry recognised accreditations that demonstrate our commitment to excellence.



 **QMS ISO9001 accredited**



Health and Safety is also at the forefront of everything we do. Employees have their designated personal protective equipment in our Agilon PPE storage area, which is fully traceable for each employee with automated replenishment processes.

All employees have received training in working in noisy environments, manual handling and lifting techniques, with sessions on H&S culture to continue all the work we have done on safety awareness.

MARKET SECTORS INCLUDE:



ARCHITECTURAL & INFRASTRUCTURE



FOOD PROCESSING



HOSPITALITY & CATERING EQUIPMENT



ENERGY, OIL & GAS



PHARMACEUTICAL



MARINE & SHIPBUILDING



RESTAURANT & SHOP FITTING



SHEET METAL WORKS



LIGHTING & FURNITURE MAKING



GENERAL FABRICATION

As a metals stockholder and processor, we recognise that our operations have an effect on the local, national and global environment. As a consequence of this, we strive for continuous improvement in our environmental performance and the elimination of pollution and waste at source in line with our business objectives, using recognised environmental best practices wherever possible.

P&P Non-Ferrous Ltd.

West Midlands

Unit 2 & 2A, Albion Works, Moor Street,
Brierley Hill, West Midlands, DY5 3SZ.

Tel: +44 (0)1384 868080

Bristol

Unit B, Myrtle Farm Industrial Estate,
Bristol, BS30 5LU.

Tel: +44 (0)1174 528913

Dorset

Units 306-308, Old Farm Barn Road,
Woolsbridge Industrial Park,
Three Legged Cross, Wimborne,
Dorset, BH21 6SP.

Tel: +44 (0)1202 823346

Essex

Tel: 07562 979298

Email: sales@ppnonferrous.co.uk
www.ppnonferrous.co.uk



Steel Dynamics Group
Family of Companies

P&P Non-Ferrous is part of the Steel Dynamics Group Family of Companies in the metals industry, relentlessly working together to reduce our customer's costs and enabling UK manufacturing to flourish.

